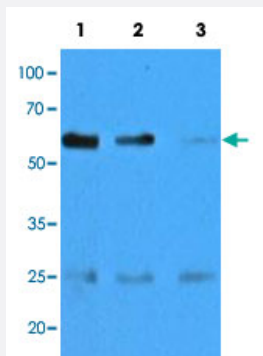


CASQ2 monoclonal antibody, clone AT4E10

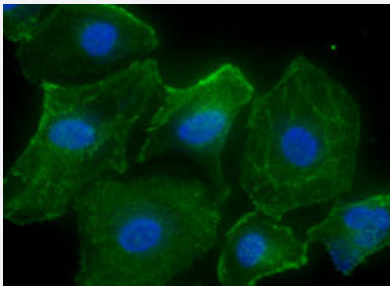
Catalog # MAB10015 Size 100 uL

Applications



Western Blot (Tissue lysate)

Western blot analysis of mouse muscle extracts (35 ug) with CASQ2 monoclonal antibody, clone AT4E10 (Cat # MAB10015) at 1:500 (Lane 1), 1:1000 (Lane 2) and , 1:5000 (Lane 3) dilution. Proteins were visualized using a goat anti-mouse secondary antibody conjugated to HRP and an ECL detection system.



Immunofluorescence

Immunofluorescence analysis of HeLa cells. The cell was stained with CASQ2 monoclonal antibody, clone AT4E10 (1:100). The secondary antibody (green) was used Alexa Fluor 488. DAPI was stained the cell nucleus (blue).

Specification

Product Description	Mouse monoclonal antibody raised against partial recombinant CASQ2.
Immunogen	Recombinant protein corresponding to amino acids 20-399 of human CASQ2.
Host	Mouse
Reactivity	Human, Mouse
Form	Liquid
Purification	Protein G purification

Concentration	1 mg/mL
Isotype	IgG1, kappa
Recommend Usage	ELISA Immunocytochemistry Immunofluorescence Western Blot The optimal working dilution should be determined by the end user.
Storage Buffer	In PBS, pH 7.4 (10% glycerol, 0.02% sodium azide).
Storage Instruction	Store at 2°C to 8°C for 1 week. For long term storage, aliquot and store at -20°C to -80°C. Aliquot to avoid repeated freezing and thawing.
Note	This product contains sodium azide: a POISONOUS AND HAZARDOUS SUBSTANCE which should be handled by trained staff only.

Applications

- Western Blot (Tissue lysate)

Western blot analysis of mouse muscle extracts (35 ug) with CASQ2 monoclonal antibody, clone AT4E10 (Cat # MAB10015) at 1:500 (Lane 1), 1:1000 (Lane 2) and 1:5000 (Lane 3) dilution. Proteins were visualized using a goat anti-mouse secondary antibody conjugated to HRP and an ECL detection system.

- Immunocytochemistry

- Immunofluorescence

Immunofluorescence analysis of HeLa cells. The cell was stained with CASQ2 monoclonal antibody, clone AT4E10 (1:100). The secondary antibody (green) was used Alexa Fluor 488. DAPI was stained the cell nucleus (blue).

- Enzyme-linked Immunoabsorbent Assay

Gene Info — CASQ2

Entrez GeneID	845
Protein Accession#	NP_001223
Gene Name	CASQ2
Gene Alias	FLJ26321, FLJ93514, PDIB2
Gene Description	calsequestrin 2 (cardiac muscle)

Omim ID [114251 604772](#)

Gene Ontology [Hyperlink](#)

Gene Summary The protein encoded by this gene specifies the cardiac muscle family member of the calsequestrin family. Calsequestrin is localized to the sarcoplasmic reticulum in cardiac and slow skeletal muscle cells. The protein is a calcium binding protein that stores calcium for muscle function. Mutations in this gene cause stress-induced polymorphic ventricular tachycardia, also referred to as catecholaminergic polymorphic ventricular tachycardia 2 (CPVT2), a disease characterized by bidirectional ventricular tachycardia that may lead to cardiac arrest. [provided by RefSeq]

Other Designations OTTHUMP00000013749|calsequestrin 2, fast-twitch, cardiac muscle|cardiac calsequestrin 2

Disease

- [Death](#)