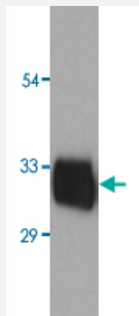


# KLK3 monoclonal antibody, clone A67-B/E3

Catalog # MAB0915

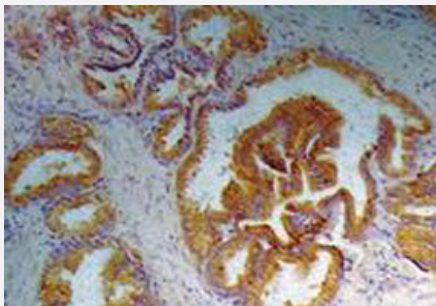
Size 100 ug

## Applications



### Western Blot (Tissue lysate)

Western Blot analysis of KLK3 monoclonal antibody, clone A67-B/E3 (Cat # MAB0915) at 1 ug/ml with 1 mg/ml KLK3 (Human) Native Protein (Cat # P4872) purified from human seminal plasma.



### Immunohistochemistry (Formalin/PFA-fixed paraffin-embedded sections)

Immunohistochemistry staining of human prostate (paraffin - embedded sections) with KLK3 monoclonal antibody, clone A67 - B/E3 (Cat # MAB0915) .

## Specification

**Product Description** Mouse monoclonal antibody raised against native KLK3.

**Immunogen** Native purified human KLK3.

**Host** Mouse

**Reactivity** Human

**Form** Liquid

**Purification** Protein-A affinity chromatography.

**Isotype** IgG1

Recommend Usage	The optimal working dilution should be determined by the end user.
Storage Buffer	In PBS, pH 7.4 (0.09% sodium azide)
Storage Instruction	Store at 4°C. Do not freeze. Aliquot to avoid repeated freezing and thawing.
Note	This product contains sodium azide: a POISONOUS AND HAZARDOUS SUBSTANCE which should be handled by trained staff only.

## Applications

- Western Blot (Tissue lysate)

Western Blot analysis of KLK3 monoclonal antibody, clone A67-B/E3 (Cat # MAB0915) at 1 ug/ml with 1 mg/ml KLK3 (Human) Native Protein (Cat # P4872) purified from human seminal plasma.

- Immunohistochemistry (Formalin/PFA-fixed paraffin-embedded sections)

Immunohistochemistry staining of human prostate (paraffin - embedded sections) with KLK3 monoclonal antibody, clone A67 - B/E3 (Cat # MAB0915) .

- Enzyme-linked Immunoabsorbent Assay

## Gene Info — KLK3

Entrez GeneID	<a href="#">354</a>
Gene Name	KLK3
Gene Alias	APS, KLK2A1, PSA, hK3
Gene Description	kallikrein-related peptidase 3
Omim ID	<a href="#">176820</a>
Gene Ontology	<a href="#">Hyperlink</a>

Gene Summary	Kallikreins are a subgroup of serine proteases having diverse physiological functions. Growing evidence suggests that many kallikreins are implicated in carcinogenesis and some have potential as novel cancer and other disease biomarkers. This gene is one of the fifteen kallikrein subfamily members located in a cluster on chromosome 19. Its protein product is a protease present in seminal plasma. It is thought to function normally in the liquefaction of seminal coagulum, presumably by hydrolysis of the high molecular mass seminal vesicle protein. Serum level of this protein, called PSA in the clinical setting, is useful in the diagnosis and monitoring of prostatic carcinoma. Alternate splicing of this gene generates several transcript variants encoding different isoforms. [provided by RefSeq]
--------------	--

**Other Designations**

P-30 antigen|gamma-seminoprotein|kallikrein 3, (prostate specific antigen)|prostate specific antigen|semenogelase|seminin

**Pathway**

- [Pathways in cancer](#)
- [Prostate cancer](#)

**Disease**

- [Breast cancer](#)
- [Breast Neoplasms](#)
- [Cardiovascular Diseases](#)
- [Diabetes Mellitus](#)
- [Disease Progression](#)
- [Edema](#)
- [Genetic Predisposition to Disease](#)
- [Lymphatic Metastasis](#)
- [Neoplasm Invasiveness](#)
- [Neoplasm Metastasis](#)
- [Neoplasm Recurrence](#)
- [Neoplasms](#)
- [Prostate cancer](#)
- [Prostatic Hyperplasia](#)
- [Prostatic Neoplasms](#)