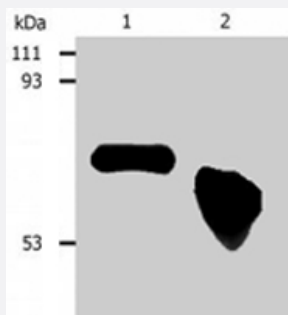


# AFP monoclonal antibody, clone AFP-01

Catalog # MAB0906      Size 100 ug

## Applications



### Western Blot (Cell lysate)

Western blotting analysis of human AFP in HepG2 human hepatocellular carcinoma cell line. Lane 1 : Immunostaining with AFP monoclonal antibody, clone AFP - 01 (Cat # MAB0906) ; reducing conditions. Lane 2 : Immunostaining with AFP monoclonal antibody, clone AFP - 01 (Cat # MAB0906) ; non - reducing conditions.

## Specification

<b>Product Description</b>	Mouse monoclonal antibody raised against native AFP.
<b>Immunogen</b>	Native purified human AFP.
<b>Host</b>	Mouse
<b>Reactivity</b>	Human
<b>Form</b>	Liquid
<b>Isotype</b>	IgG1
<b>Recommend Usage</b>	ELISA Western Blot (1-2 ug/mL) The optimal working dilution should be determined by the end user.
<b>Storage Buffer</b>	In PBS, pH 7.4 (0.09% sodium azide)
<b>Storage Instruction</b>	Store at 4°C. Do not freeze. Aliquot to avoid repeated freezing and thawing.
<b>Note</b>	This product contains sodium azide: a POISONOUS AND HAZARDOUS SUBSTANCE which should be handled by trained staff only.

## Applications

- Western Blot (Cell lysate)

Western blotting analysis of human AFP in HepG2 human hepatocellular carcinoma cell line. Lane 1 : Immunostaining with AFP monoclonal antibody, clone AFP - 01 (Cat # MAB0906) ; reducing conditions. Lane 2 : Immunostaining with AFP monoclonal antibody, clone AFP - 01 (Cat # MAB0906) ; non - reducing conditions.

- Immunoprecipitation

- Enzyme-linked Immunoabsorbent Assay

## Gene Info — AFP

Entrez GeneID	<a href="#">174</a>
Gene Name	AFP
Gene Alias	FETA, HPAFP
Gene Description	alpha-fetoprotein
Omim ID	<a href="#">104150</a>
Gene Ontology	<a href="#">Hyperlink</a>
Gene Summary	This gene encodes alpha-fetoprotein, a major plasma protein produced by the yolk sac and the liver during fetal life. Alpha-fetoprotein expression in adults is often associated with hepatoma or teratoma. However, hereditary persistence of alpha-fetoprotein may also be found in individuals with no obvious pathology. The protein is thought to be the fetal counterpart of serum albumin, and the alpha-fetoprotein and albumin genes are present in tandem in the same transcriptional orientation on chromosome 4. Alpha-fetoprotein is found in monomeric as well as dimeric and trimeric forms, and binds copper, nickel, fatty acids and bilirubin. The level of alpha-fetoprotein in amniotic fluid is used to measure renal loss of protein to screen for spina bifida and anencephaly. [provided by RefSeq]
Other Designations	OTTHUMP00000160480 alpha-1-fetoprotein alpha-fetoglobulin

## Disease

- [Carcinoma](#)

- [Liver Cirrhosis](#)

- [Liver Neoplasms](#)