

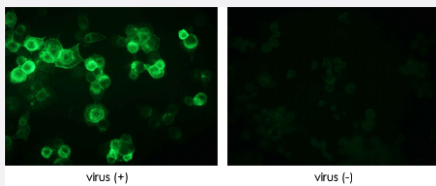
Baculovirus envelope gp64 monoclonal antibody, clone AF-2C8

Catalog # MAB0015 Size 50 ug

Applications

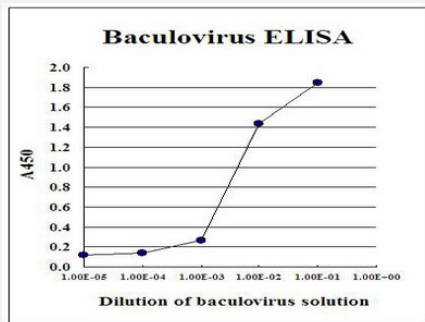
Immunofluorescence

Immunofluorescence detection of baculovirus infected cells.



Enzyme-linked Immunoabsorbent Assay

Sandwich ELISA for measurement of recombinant AcMNPV-based recombinant baculovirus. Using Baculovirus envelope gp64 monoclonal antibody, clone AF-2C8 (Cat # MAB0015).



Specification

Product Description	Mouse monoclonal antibody raised against baculovirus envelope gp64.
Immunogen	Wild type AcNPV particles.
Host	Mouse
Form	Liquid
Isotype	IgG2a
Quality Control Testing	Baculovirus envelope gp64 antibody detects the gp64 envelope protein of baculovirus Autographa c alifornica nuclear polyhedrosis virus (AcNPV).

Recommend Usage	Immunocytochemistry (0.5-1 ug/mL) The optimal working dilution should be determined by the end user.
Storage Buffer	In 10 mM HEPES/KOH, 150 mM NaCl, pH 7.5 (50% glycerol)
Storage Instruction	Store at -20°C. Aliquot to avoid repeated freezing and thawing.

Applications

- Immunocytochemistry

- Immunofluorescence

Immunofluorescence detection of baculovirus infected cells.

- Enzyme-linked Immunoabsorbent Assay

Sandwich ELISA for measurement of recombinant AcMNPV-based recombinant baculovirus. Using Baculovirus envelope gp64 monoclonal antibody, clone AF-2C8 (Cat # MAB0015).

- Flow Cytometry