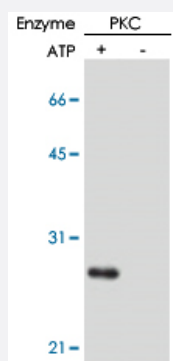


PPP1R14A (phospho T38) monoclonal antibody, clone AK-1F11

Catalog # MAB0013

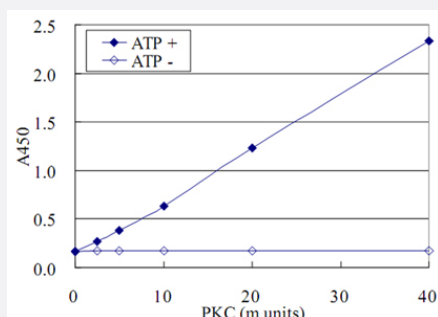
Size 100 ug

Applications



Western Blot (Recombinant protein)

In vitro kinase reaction and detection of phosphorylation of CPI-17 at Thr38 residue by using CPI-17 (phospho T38) monoclonal antibody, clone AK-1F11 (Cat # MAB0013). GST-CPI-17 was phosphorylated by protein kinase C derived from rat brain in vitro and proved by CPI-17 (phospho T38) monoclonal antibody, clone AK-1F11 (Cat # MAB0013) after SDS-PAGE and transfer to PVDF membrane.



Enzyme-linked Immunoabsorbent Assay

ELISA for measurement of recombinant PKC activity using CPI-17 (phospho T38) monoclonal antibody, clone AK-1F11 (Cat # MAB0013).

Specification

Product Description

Mouse monoclonal antibody raised against synthetic phosphopeptide of PPP1R14A.

Immunogen

Synthetic phosphopeptide (conjugated with KLH) corresponding to residues surrounding T38 of human PPP1R14A.

Host

Mouse

Reactivity

Human, Mouse, Rat

Form

Liquid

Isotype

IgG1

Quality Control Testing	Phospho-CPI-17 Thr38 Antibody detects phosphorylated recombinant CPI-17 when phosphorylated at threonine38 in vitro by means of western blotting and ELISA.
Recommend Usage	Western Blot (1-2 ug/mL) ELISA (1 ug/mL) The optimal working dilution should be determined by the end user.
Storage Buffer	In 10 mM HEPES/KOH, 150 mM NaCl, pH 7.5 (50% glycerol)
Storage Instruction	Store at -20°C. Aliquot to avoid repeated freezing and thawing.

Applications

- Western Blot (Recombinant protein)

In vitro kinase reaction and detection of phosphorylation of CPI-17 at Thr38 residue by using CPI-17 (phospho T38) monoclonal antibody, clone AK-1F11 (Cat # MAB0013). GST-CPI-17 was phosphorylated by protein kinase C derived from rat brain in vitro and proved by CPI-17 (phospho T38) monoclonal antibody, clone AK-1F11 (Cat # MAB0013) after SDS-PAGE and transfer to PVDF membrane.

- Enzyme-linked Immunoabsorbent Assay

ELISA for measurement of recombinant PKC activity using CPI-17 (phospho T38) monoclonal antibody, clone AK-1F11 (Cat # MAB0013).

Gene Info — PPP1R14A

Entrez GeneID	94274
GeneBank Accession#	NM_033256
Protein Accession#	NP_150281
Gene Name	PPP1R14A
Gene Alias	CPI-17, CPI17, PPP1INL
Gene Description	protein phosphatase 1, regulatory (inhibitor) subunit 14A
Omim ID	608153
Gene Ontology	Hyperlink
Gene Summary	PPP1R14A is a phosphorylation-dependent inhibitor of smooth muscle myosin phosphatase (see MIM 603768). Inhibition leads to increased myosin phosphorylation and enhances smooth muscle contraction in the absence of increased intracellular Ca(2+) concentration.[supplied by OMIM]

Other Designations

17-KDa protein|17-kDa PKC-potentiated inhibitory protein of PP1|PKC-potentiated inhibitory protein of PP1

Pathway

- [Vascular smooth muscle contraction](#)