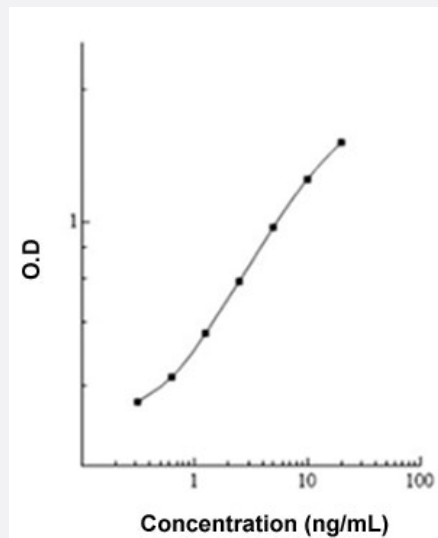


TPI1 (Human) ELISA Kit

Catalog # KA6021 Size 1 Kit

Applications



The standard curve is for the purpose of illustration only and should not be used to calculate unknowns. A standard curve should be generated each time the assay is performed.

Specification

Product Description	TPI1 (Human) ELISA Kit is a sandwich enzyme-linked immunosorbent assay for the quantitative measurement of human TPI1.
Suitable Sample	Cell Culture Supernates, Cell Lysate, Milk, Plasma, Serum.
Sample Volume	50 μ L
Label	Peroxidase-conjugated
Detection Method	Colorimetric
Assay Type	Quantitative
Calibration Range	0.313 to 20 ng/mL
Reactivity	Human
Regulatory Status	For research use only (RUO)

Quality Control Testing

Standard curve

The standard curve is for the purpose of illustration only and should not be used to calculate unknowns. A standard curve should be generated each time the assay is performed.

Storage Instruction

Store components of the kit at 4°C or -20°C as described in the protocol.

Applications

- Quantification

Gene Info — TPI1

Entrez GeneID[7167](#)**Protein Accession#**[P60174](#)**Gene Name**

TPI1

Gene Alias

MGC88108, TPI

Gene Description

triosephosphate isomerase 1

Omim ID[190450](#)**Gene Ontology**[Hyperlink](#)**Gene Summary**

This gene encodes an enzyme, consisting of two identical proteins, which catalyzes the isomerization of glyceraldehydes 3-phosphate (G3P) and dihydroxy-acetone phosphate (DHAP) in glycolysis and gluconeogenesis. Mutations in this gene are associated with triosephosphate isomerase deficiency. Pseudogenes have been identified on chromosomes 1, 4, 6 and 7. Alternative splicing results in multiple transcript variants. [provided by RefSeq]

Other Designations

-

Pathway

- [Carbon fixation in photosynthetic organisms](#)
- [Fructose and mannose metabolism](#)
- [Glycolysis / Gluconeogenesis](#)
- [Inositol phosphate metabolism](#)

- [Metabolic pathways](#)

Disease

- [Malaria](#)