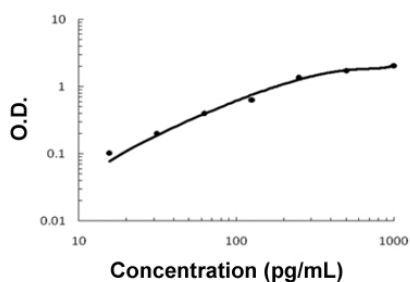


# IL2 (Mouse) ELISA Kit

Catalog # KA5612      Size 1 Kit

## Applications



The standard curve is for the purpose of illustration only and should not be used to calculate unknowns. A standard curve should be generated each time the assay is performed.

## Specification

<b>Product Description</b>	IL2 (Mouse) ELISA Kit is a sandwich enzyme-linked immunosorbent assay for the quantitative measurement of mouse IL2.
<b>Suitable Sample</b>	Cell Culture Supernates, Plasma (Heparin, EDTA, Citrate), and Serum.
<b>Sample Volume</b>	100 uL
<b>Label</b>	HRP-conjugated
<b>Detection Method</b>	Colorimetric
<b>Assay Type</b>	Quantitative
<b>Calibration Range</b>	15.6 to 1000 pg/mL
<b>Reactivity</b>	Mouse
<b>Regulatory Status</b>	For research use only (RUO)
<b>Quality Control Testing</b>	Standard curve The standard curve is for the purpose of illustration only and should not be used to calculate unknowns. A standard curve should be generated each time the assay is performed.
<b>Storage Instruction</b>	Store at 4°C for 6 months, at -20°C for 12 months. Avoid multiple freeze-thaw cycles.

## Applications

- Quantification

## Gene Info — Il2

Entrez GeneID	<a href="#">16183</a>
---------------	-----------------------

Protein Accession#	<a href="#">P04351</a>
--------------------	------------------------

Gene Name	Il2
-----------	-----

Gene Alias	Il-2
------------	------

Gene Description	interleukin 2
------------------	---------------

Gene Ontology	<a href="#">Hyperlink</a>
---------------	---------------------------

Other Designations	OTTMUSP00000007837 interleukin-2
--------------------	----------------------------------