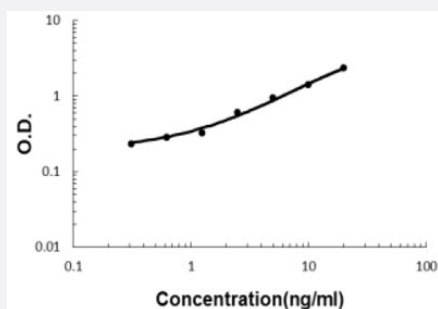


Plxna1 (Rat) ELISA Kit

Catalog # KA5555 Size 1 Kit

Applications



The standard curve is for the purpose of illustration only and should not be used to calculate unknowns. A standard curve should be generated each time the assay is performed.

Specification

Product Description	Plxna1 (Rat) ELISA Kit is a sandwich enzyme-linked immunosorbent assay for quantitative detection of rat Plexin A1 in cell culture supernates, serum and plasma (heparin, EDTA).
Suitable Sample	Cell culture supernates, serum and plasma (heparin, EDTA)
Sample Volume	100 uL
Label	HRP-conjugated
Detection Method	Colorimetric
Assay Type	Quantitative
Calibration Range	0.312 to 20 ng/mL
Reactivity	Rat
Regulatory Status	For research use only (RUO)
Quality Control Testing	Standard curve The standard curve is for the purpose of illustration only and should not be used to calculate unknowns. A standard curve should be generated each time the assay is performed.
Storage Instruction	Store at 4°C for six months. For long term storage store at -20°C. Avoid repeated freezing and thawing.

Applications

- Quantification

Gene Info — RGD1560871

Entrez GeneID	362398
---------------	------------------------

Gene Name	RGD1560871
-----------	------------

Gene Alias	-
------------	---

Gene Description	similar to plexin 1
------------------	---------------------

Gene Ontology	Hyperlink
---------------	---------------------------

Other Designations	-
--------------------	---