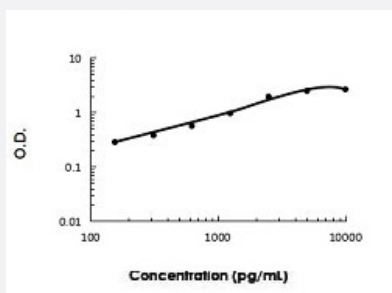


PDGFA (Human) ELISA Kit

Catalog # KA5487

Size 1 Kit

Applications



The standard curve is for the purpose of illustration only and should not be used to calculate unknowns. A standard curve should be generated each time the assay is performed.

Specification

Product Description PDGFA (Human) ELISA Kit is a sandwich enzyme-linked immunosorbent assay for the quantitative measurement of human PDGFA in cell culture supernates, serum and plasma (heprain, EDTA).

Suitable Sample Cell culture supernates, Serum and Plasma (heprain, EDTA)

Sample Volume 100 uL

Label HRP-conjugated

Detection Method Colorimetric

Assay Type Quantitative

Calibration Range 156 to 10000 pg/mL

Reactivity Human

Regulatory Status For research use only (RUO)

Quality Control Testing Standard curve
The standard curve is for the purpose of illustration only and should not be used to calculate unknowns. A standard curve should be generated each time the assay is performed.

Storage Instruction Store at 4°C for 6 months, at -20°C for 12 months. Avoid multiple freeze-thaw cycles.

Applications

- Quantification

Gene Info — PDGFA

Entrez GeneID	5154
Gene Name	PDGFA
Gene Alias	PDGF-A, PDGF1
Gene Description	platelet-derived growth factor alpha polypeptide
Omim ID	173430
Gene Ontology	Hyperlink
Gene Summary	The protein encoded by this gene is a member of the platelet-derived growth factor family. The four members of this family are mitogenic factors for cells of mesenchymal origin and are characterized by a motif of eight cysteines. This gene product can exist either as a homodimer or as a heterodimer with the platelet-derived growth factor beta polypeptide, where the dimers are connected by disulfide bonds. Studies using knockout mice have shown cellular defects in oligodendrocytes, alveolar smooth muscle cells, and Leydig cells in the testis; knockout mice die either as embryos or shortly after birth. Two splice variants have been identified for this gene. [provided by RefSeq]
Other Designations	PDGF A-chain platelet-derived growth factor alpha platelet-derived growth factor alpha chain platelet-derived growth factor alpha isoform 2 preproprotein

Pathway

- [Cytokine-cytokine receptor interaction](#)
- [Focal adhesion](#)
- [Gap junction](#)
- [Glioma](#)
- [MAPK signaling pathway](#)
- [Melanoma](#)
- [Pathways in cancer](#)
- [Prostate cancer](#)

- [Regulation of actin cytoskeleton](#)

Disease

- [Asthma](#)
- [Coronary Artery Disease](#)
- [Genetic Predisposition to Disease](#)