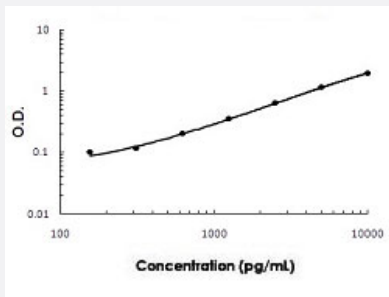


# BMP5 (Monkey) ELISA Kit

Catalog # KA5234      Size 1 Kit

## Applications



The standard curve is for the purpose of illustration only and should not be used to calculate unknowns. A standard curve should be generated each time the assay is performed.

## Specification

<b>Product Description</b>	BMP5 (Monkey) ELISA Kit is a sandwich enzyme-linked immunosorbent assay for the quantitative measurement of monkey BMP5 in cell culture supernates, serum and bone tissue.
<b>Suitable Sample</b>	Cell culture supernates, Serum and Bone tissue
<b>Sample Volume</b>	100 uL
<b>Label</b>	HRP-conjugated
<b>Detection Method</b>	Colorimetric
<b>Assay Type</b>	Quantitative
<b>Calibration Range</b>	156 to 10000 pg/mL
<b>Reactivity</b>	Monkey
<b>Regulatory Status</b>	For research use only (RUO)
<b>Quality Control Testing</b>	Standard curve The standard curve is for the purpose of illustration only and should not be used to calculate unknowns. A standard curve should be generated each time the assay is performed.
<b>Storage Instruction</b>	Store at 4°C for 6 months, at -20°C for 12 months. Avoid multiple freeze-thaw cycles.

## Applications

- Quantification

## Gene Info — LOC711989

Entrez GeneID	<a href="#">711989</a>
---------------	------------------------

Gene Name	LOC711989
-----------	-----------

Gene Alias	-
------------	---

Gene Description	similar to bone morphogenetic protein 5 preproprotein
------------------	---

Gene Ontology	<a href="#">Hyperlink</a>
---------------	---------------------------

Other Designations	-
--------------------	---