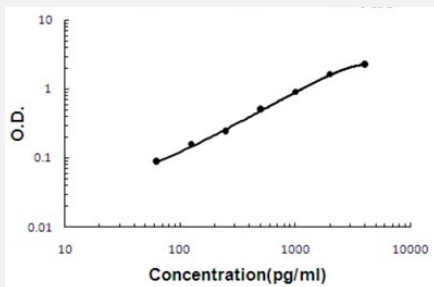


# GREM2 (Human) ELISA Kit

Catalog # KA5174      Size 1 Kit

## Applications



The standard curve is for the purpose of illustration only and should not be used to calculate unknowns. A standard curve should be generated each time the assay is performed.

## Specification

<b>Product Description</b>	GREM2 (Human) ELISA Kit is a sandwich enzyme-linked immunosorbent assay for quantitative detection of human GREM2 in cell culture supernates, cell lysates, serum and plasma (heparin, EDTA).
<b>Suitable Sample</b>	Cell culture supernates, cell lysates, serum and plasma (heparin, EDTA)
<b>Sample Volume</b>	100 uL
<b>Label</b>	HRP-conjugated
<b>Detection Method</b>	Colorimetric
<b>Assay Type</b>	Quantitative
<b>Calibration Range</b>	62.5 to 4000 pg/mL
<b>Reactivity</b>	Human
<b>Regulatory Status</b>	For research use only (RUO)
<b>Quality Control Testing</b>	Standard curve The standard curve is for the purpose of illustration only and should not be used to calculate unknowns. A standard curve should be generated each time the assay is performed.
<b>Storage Instruction</b>	Store at 4°C for six months. For long term storage store at -20°C. Avoid repeated freezing and thawing.

## Applications

- Quantification

## Gene Info — GREM2

Entrez GeneID	<a href="#">64388</a>
Gene Name	GREM2
Gene Alias	CKTSF1B2, DAND3, PRDC
Gene Description	gremlin 2, cysteine knot superfamily, homolog (Xenopus laevis)
Omim ID	<a href="#">608832</a>
Gene Ontology	<a href="#">Hyperlink</a>
Gene Summary	<p>This gene encodes a member of the BMP (bone morphogenic protein) antagonist family. Like BMPs, BMP antagonists contain cystine knots and typically form homo- and heterodimers. The CAN (cerberus and dan) subfamily of BMP antagonists, to which this gene belongs, is characterized by a C-terminal cystine knot with an eight-membered ring. The antagonistic effect of the secreted glycosylated protein encoded by this gene is likely due to its direct binding to BMP proteins. As an antagonist of BMP, this gene may play a role in regulating organogenesis, body patterning, and tissue differentiation. [provided by RefSeq]</p>
Other Designations	OTTHUMP00000037834 cysteine knot superfamily 1, BMP antagonist 2 gremlin 2 protein related to DAN and cerberus

## Disease

- [Genetic Predisposition to Disease](#)
- [Multiple Sclerosis](#)
- [Tobacco Use Disorder](#)