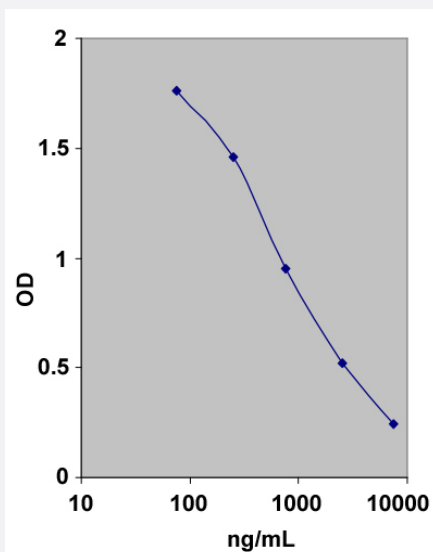


# GABA ELISA Kit

Catalog # KA4912      Size 1 Kit

## Applications



The standard curve is for the purpose of demonstration only and should not be used to calculate unknowns. A standard curve should be generated each time the assay is performed.

## Specification

<b>Product Description</b>	GABA ELISA Kit is an enzyme immunoassay (ELISA) for the quantitative determination of gamma-aminobutyric acid (GABA) in urine.
<b>Suitable Sample</b>	Urine
<b>Sample Volume</b>	For the determination of samples in a range between 25- 2500 ng/mL: 300 $\mu$ L (undiluted) For the determination of samples in a range between 75- 7500 ng/mL: 100 $\mu$ L
<b>Label</b>	HRP-conjugate
<b>Detection Method</b>	Colorimetric
<b>Assay Type</b>	Quantitative
<b>Calibration Range</b>	For the determination of samples in a range between 25- 2500 ng/mL: 25-2500 ng/mL For the determination of samples in a range between 75- 7500 ng/mL: 59.1- 7500 ng/mL
<b>Reactivity</b>	Human

**Storage Instruction**

Store the kit at 4°C.

**Applications**

- Quantification

**Publication Reference**

- [Effect of children secondhand smoke exposure associated with GABA concentration: Influence from parents who are extremely heavy smokers in urban households.](#)

Jadsada Kunno, Panu Pimviriyakul, Titaporn Luangwilai, Saowanee Sematong, Busaba Supawattanabodee, Sathit Kuratong, Mark Gregory Robson.

The Science of the Total Environment 2024 Mar; 918:170720.

Application: Quant, Human, Human urine

- [The Effect of a Probiotic Complex on the Gut-Brain Axis: A Translational Study.](#)

Vincenzo Nobile, Silvana Giardina, Francesco Puoci.

Neuropsychobiology 2021 Aug; 1.

Application: Quant, Human, SK-N-DZ cells