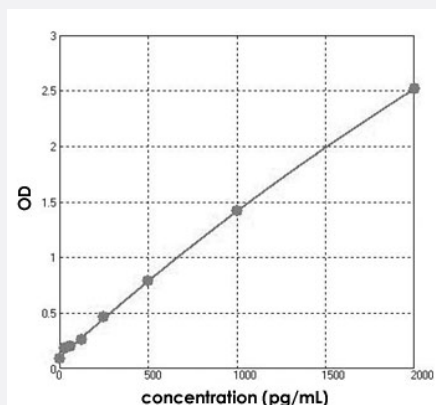


ProGRP (Human) ELISA Kit

Catalog # KA4904

Size 1 Kit

Applications



The standard curve is for the purpose of demonstration only and should not be used to calculate unknowns. A standard curve should be generated each time the assay is performed.

Specification

Product Description

ProGRP (Human) ELISA Kit is a sandwich enzyme-linked immunosorbent assay for the quantitative measurement of human ProGRP.

Suitable Sample

Cell culture supernatant, Plasma, Serum, Tissue homogenate

Sample Volume

100 uL (Prediluted)

Label

HRP-conjugated

Detection Method

Colorimetric

Assay Type

Quantitative

Calibration Range

31.2 to 2000 pg/mL

Reactivity

Human

Regulation Status

For research use only (RUO)

Quality Control Testing

Standard curve

The standard curve is for the purpose of demonstration only and should not be used to calculate unknowns. A standard curve should be generated each time the assay is performed.

Storage Instruction

Store at 4°C for 6 months, or at -20°C for one year.
Store HRP conjugated antibody at 4°C for one year.

Applications

- Quantification

Gene Info — GRP

Entrez GeneID [2922](#)

Gene Name GRP

Gene Alias BN, GRP-10, preproGRP, proGRP

Gene Description gastrin-releasing peptide

Omim ID [137260](#)

Gene Ontology [Hyperlink](#)

Gene Summary This gene encodes a member of the bombesin-like family of gastrin-releasing peptides. Its prepro protein, following cleavage of a signal peptide, is further processed to produce either the 27 aa gastrin-releasing peptide or the 10 aa neuromedin C. These smaller peptides regulate numerous functions of the gastrointestinal and central nervous systems, including release of gastrointestinal hormones, smooth muscle cell contraction, and epithelial cell proliferation. These peptides are also likely to play a role in human cancers of the lung, colon, stomach, pancreas, breast, and prostate. Alternative splicing results in multiple transcript variants encoding different isoforms. [provided by RefSeq]

Other Designations bombesin|neuromedin C|pre-progastrin releasing peptide

Pathway

- [Neuroactive ligand-receptor interaction](#)

Disease

- [Anorexia Nervosa](#)
- [Bulimia](#)

- [Genetic Predisposition to Disease](#)
- [Mental Disorders](#)
- [Panic Disorder](#)