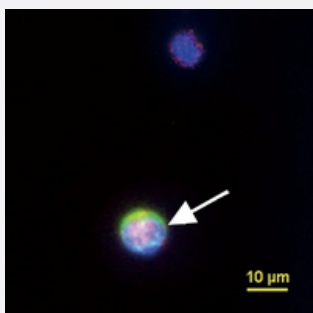


CytoQuest™ EpCAM PanCK CD45 CD44v9 EMT Antibody Kit

Catalog # KA4897

Size 1 Kit

Applications



Immunofluorescence (Circulating Tumor Cell)

Representative images of CTC (white arrow) from castration-resistant prostate cancer patient. CTC was detected by using immunofluorescence staining for PanCK (FITC, green), CD44v9 (APC, red), CD45 (PE, orange) and Nucleus (DAPI, blue).

Specification

Product Description

CytoQuest™ EpCAM PanCK CD45 CD44v9 EMT Antibody Kit contains antibodies for immobilization and immunostaining of EMT transformed circulating epithelial cells.

Instrument Requirement

[CytoQuest™ CR](#)

Chip Requirement

[CytoChipNano](#)

Supplied Product

Kit content:

1. Anti-EpCAM capturing antibody (Biotin):
Biotin conjugated Anti-EpCAM antibody for EMT transformed circulating epithelial cell capturing.
2. Anti-PanCK detecting antibody (FITC):
FITC conjugated Anti-PanCK antibody for EMT transformed circulating epithelial cell detection.
3. Anti-CD44v9 detecting antibody (APC):
APC conjugated Anti-CD44v9 antibody for EMT transformed circulating epithelial cell detection.
4. Anti-CD45 detecting antibody (PE):
PE conjugated Anti-CD45 antibody for EMT transformed circulating epithelial cell detection.
5. 50X Antibody Dilution Buffer (50X ADB).

*Reagents are sufficient for 20 assays using recommended protocol.

Regulatory Status

For research use only (RUO)

Storage Instruction

Store Anti-EpCAM capturing antibody (Biotin), Anti-PanCK detecting antibody (FITC), Anti-CD44v9 detecting antibody (APC) and Anti-CD45 detecting antibody (PE) at 4°C.

Store 50X Antibody Dilution Buffer (50X ADB) at -20°C.

Aliquot to avoid repeated freezing and thawing.

Applications

- Immunofluorescence (Circulating Tumor Cell)

Representative images of CTC (white arrow) from castration-resistant prostate cancer patient. CTC was detected by using immunofluorescence staining for PanCK (FITC, green), CD44v9 (APC, red), CD45 (PE, orange) and Nucleus (DAPI, blue).