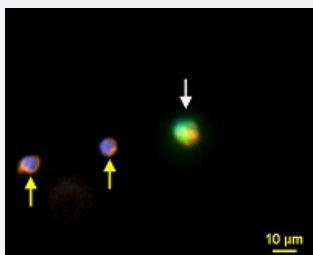


CytoQuest™ EpCAM PanCK CD45 PLS3 EMT Antibody Kit

Catalog # KA4586

Size 1 Kit

Applications



Immunofluorescence (Circulating Tumor Cell)

Representative images of CTC (white arrow) and WBCs (yellow arrow) from pancreatic cancer patient. CTCs was detected by using immunofluorescence staining for PanCK (FITC, green), Plastin-3 (Alexa647, red), CD45 (PE, orange) and Nucleus (DAPI, blue).

Specification

Product Description

CytoQuest™ EpCAM PanCK CD45 PLS3 EMT Antibody Kit contains antibodies for immobilization and immunostaining of EMT transformed circulating epithelial cells.

Instrument Requirement

[CytoQuest™ CR](#)

Chip Requirement

[CytoChipNano](#)

Supplied Product

Kit content:

1. Anti-EpCAM capturing antibody (Biotin):

Biotin conjugated Anti-EpCAM antibody for EMT transformed circulating epithelial cell capturing.

2. Anti-PanCK detecting antibody (FITC):

FITC conjugated Anti-PanCK antibody for EMT transformed circulating epithelial cell detection.

3. Anti-Plastin-3 detecting antibody (Alexa 647):

Alexa 647 conjugated Anti-Plastin-3 antibody for EMT transformed circulating epithelial cell detection

4. Anti-CD45 detecting antibody (PE):

PE conjugated Anti-CD45 antibody for EMT transformed circulating epithelial cell detection.

5. 50X Antibody Dilution Buffer (50X ADB).

*Reagents are sufficient for 20 assays using recommended protocol.

Regulatory Status

For research use only (RUO)

Storage Instruction

Store Anti-EpCAM capturing antibody (Biotin), Anti-PanCK detecting antibody (FITC), Anti-Plastin-3 detecting antibody (Alexa 647) and Anti-CD45 detecting antibody (PE) at 4°C.

Store 50X Antibody Dilution Buffer (50X ADB) at -20°C.

Aliquot to avoid repeated freezing and thawing.

Applications

- Immunofluorescence (Circulating Tumor Cell)

Representative images of CTC (white arrow) and WBCs (yellow arrow) from pancreatic cancer patient. CTCs was detected by using immunofluorescence staining for PanCK (FITC, green), Plastin-3 (Alexa647, red), CD45 (PE, orange) and Nucleus (DAPI, blue).