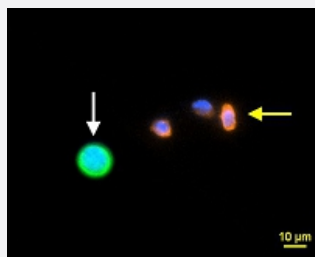


CytoQuest™ EpCAM PanCK CD45 Mouse Antibody Kit

Catalog # KA4576

Size 1 Kit

Applications



Immunofluorescence (Circulating Tumor Cell)

Representative images of lung cancer cell (white arrow) and mouse WBC (yellow arrow) from mouse blood spiked with human lung adenocarcinoma cells (PC-9). Lung cancer cells were detected by using immunofluorescence staining for human PanCK (FITC, green), mouse CD45 (PE, orange) and Nucleus (DAPI, blue).

Specification

Product Description	CytoQuest™ EpCAM PanCK CD45 Mouse Antibody Kit contains antibodies for immobilization and immunostaining of circulating epithelial cells.
Instrument Requirement	CytoQuest™ CR
Chip Requirement	CytoChipNano
Supplied Product	<p>Kit content:</p> <ol style="list-style-type: none"> 1. Anti-EpCAM capturing antibody (Biotin): Biotin conjugated Anti-EpCAM antibody for CTC capturing. 2. Anti-PanCK detecting antibody (FITC): FITC conjugated Anti-PanCK antibody for CTC detection. 3. Anti-Mouse CD45 detecting antibody (PE): PE conjugated Anti-CD45 antibody for CTC detection. 4. 50X Antibody Dilution Buffer (50X ADB). <p>*Reagents are sufficient for 20 assays using recommended protocol.</p>
Regulatory Status	For research use only (RUO)

Storage Instruction

Store Anti-EpCAM capturing antibody (Biotin), Anti-PanCK detecting antibody (FITC) and Anti-Mouse CD45 detecting antibody (PE) at 4°C.

Store 50X Antibody Dilution Buffer (50X ADB) at -20°C.

Aliquot to avoid repeated freezing and thawing.

Applications

- Immunofluorescence (Circulating Tumor Cell)

Representative images of lung cancer cell (white arrow) and mouse WBC (yellow arrow) from mouse blood spiked with human lung adenocarcinoma cells (PC-9). Lung cancer cells were detected by using immunofluorescence staining for human PanCK (FITC, green), mouse CD45 (PE, orange) and Nucleus (DAPI, blue).