

# CytoQuest™ EpCAM PanCK CD45 Antibody Kit

Catalog # KA4439

Size 1 Kit

## Applications



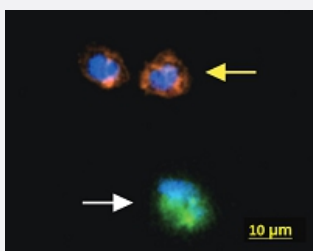
### Immunofluorescence (Circulating Tumor Cell)

Representative images of CTC (white arrow) and WBC (yellow arrow) from patient with renal cell carcinoma. CTCs were detected by using immunofluorescence staining for PanCK (FITC, green), CD45 (PE, orange) and Nucleus (DAPI, blue).



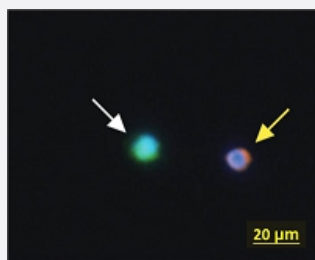
### Immunofluorescence (Circulating Tumor Cell)

Representative images of CTC (white arrow) and WBC (yellow arrow) from patient with NSCLC. CTCs were detected by using immunofluorescence staining for PanCK (FITC, green), CD45 (PE, orange) and Nucleus (DAPI, blue).



### Immunofluorescence (Circulating Tumor Cell)

Representative images of CTC (white arrow) and WBC (yellow arrow) from patient with oral cancer. CTCs were detected by using immunofluorescence staining for PanCK (FITC, green), CD45 (PE, orange) and Nucleus (DAPI, blue).



## Immunofluorescence (Circulating Tumor Cell)

Representative images of CTC (white arrow) and WBC (yellow arrow) from patient with cholangiocarcinoma. CTCs were detected by using immunofluorescence staining for PanCK (FITC, green), CD45 (PE, orange) and Nucleus (DAPI, blue).

## Specification

<b>Product Description</b>	CytoQuest™ EpCAM PanCK CD45 Antibody Kit contains antibodies for immobilization and immuno staining of circulating epithelial cells.
<b>Instrument Requirement</b>	<a href="#">CytoQuest™ CR</a>
<b>Chip Requirement</b>	<a href="#">CytoChipNano</a>
<b>Supplied Product</b>	<p>Kit content:</p> <ol style="list-style-type: none"> <li>1. Anti-EpCAM capturing antibody (Biotin): Biotin conjugated Anti-EpCAM antibody for CTC capturing.</li> <li>2. Anti-PanCK detecting antibody (FITC): FITC conjugated Anti-PanCK antibody for CTC detection.</li> <li>3. Anti-CD45 detecting antibody (PE): PE conjugated Anti-CD45 antibody for CTC detection.</li> <li>4. 50X Antibody Dilution Buffer (50X ADB).</li> </ol> <p>*Reagents are sufficient for 20 assays using recommended protocol.</p>
<b>Regulatory Status</b>	For research use only (RUO)
<b>Storage Instruction</b>	<p>Store Anti-PanCK detecting antibody (FITC) and Anti-CD45 detecting antibody (PE) at 4°C.</p> <p>Store Anti-EpCAM capturing antibody (Biotin), 50X Antibody Dilution Buffer (50X ADB) at -20°C.</p> <p>Aliquot to avoid repeated freezing and thawing.</p>

## Applications

- Immunofluorescence (Circulating Tumor Cell)

Representative images of CTC (white arrow) and WBC (yellow arrow) from patient with renal cell carcinoma. CTCs were detected by using immunofluorescence staining for PanCK (FITC, green), CD45 (PE, orange) and Nucleus (DAPI, blue).

- Immunofluorescence (Circulating Tumor Cell)

Representative images of CTC (white arrow) and WBC (yellow arrow) from patient with NSCLC. CTCs were detected by using immunofluorescence staining for PanCK (FITC, green), CD45 (PE, orange) and Nucleus (DAPI, blue).

- Immunofluorescence (Circulating Tumor Cell)

Representative images of CTC (white arrow) and WBC (yellow arrow) from patient with oral cancer. CTCs were detected by using immunofluorescence staining for PanCK (FITC, green), CD45 (PE, orange) and Nucleus (DAPI, blue).

- Immunofluorescence (Circulating Tumor Cell)

Representative images of CTC (white arrow) and WBC (yellow arrow) from patient with cholangiocarcinoma. CTCs were detected by using immunofluorescence staining for PanCK (FITC, green), CD45 (PE, orange) and Nucleus (DAPI, blue).