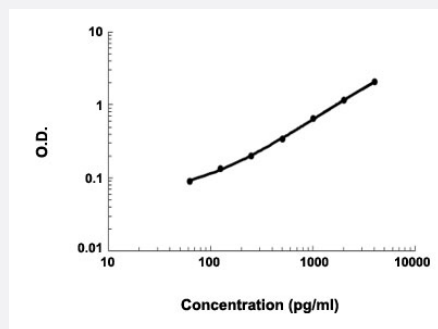


AXL (Human) ELISA Kit

Catalog # KA4197 Size 1 Kit

Applications



The standard curve is for the purpose of demonstration only and should not be used to calculate unknowns. A standard curve should be generated each time the assay is performed.

Specification

Product Description	AXL (Human) ELISA Kit is a sandwich enzyme immunoassay for the quantitative measurement of human AXL.
Suitable Sample	Cell culture supernates, Plasma (heparin, EDTA), Serum
Sample Volume	100 μ L
Label	HRP-conjugated
Detection Method	Colorimetric
Assay Type	Quantitative
Calibration Range	62.5 to 4000 pg/mL
Reactivity	Human
Regulation Status	For research use only (RUO)
Quality Control Testing	Standard curve The standard curve is for the purpose of demonstration only and should not be used to calculate unknowns. A standard curve should be generated each time the assay is performed.
Storage Instruction	Store at 4°C for 6 months, at -20°C for 12 months. Avoid multiple freeze-thaw cycles.

Applications

- Quantification

Gene Info — AXL

Entrez GeneID	558
Gene Name	AXL
Gene Alias	JTK11, UFO
Gene Description	AXL receptor tyrosine kinase
Omim ID	109135
Gene Ontology	Hyperlink
Gene Summary	The protein encoded by this gene is a member of the receptor tyrosine kinase subfamily. Although it is similar to other receptor tyrosine kinases, this protein represents a unique structure of the extracellular region that juxtaposes IgL and FNIII repeats. It transduces signals from the extracellular matrix into the cytoplasm by binding growth factors like vitamin K-dependent protein growth-arrest-specific gene 6. It is involved in the stimulation of cell proliferation and can also mediate cell aggregation by homophilic binding. Alternatively spliced transcript variants encoding different isoforms have been identified. [provided by RefSeq]
Other Designations	AXL transforming sequence/gene oncogene AXL

Disease

- [Cardiovascular Diseases](#)
- [Carotid Artery Diseases](#)
- [Diabetes Mellitus](#)
- [Edema](#)
- [Genetic Predisposition to Disease](#)
- [Stroke](#)