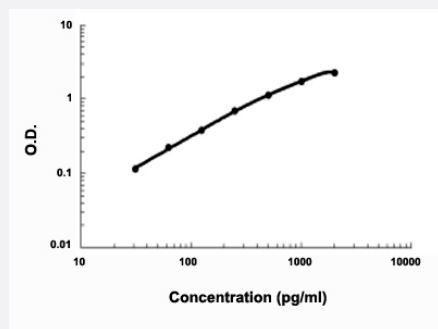


TNFRSF17 (Human) ELISA Kit

Catalog # KA3884 Size 1 Kit

Applications



The standard curve is for the purpose of demonstration only and should not be used to calculate unknowns. A standard curve should be generated each time the assay is performed.

Specification

Product Description	TNFRSF17 (Human) ELISA Kit is a sandwich enzyme immunoassay for the quantitative measurement of human TNFRSF17.
Suitable Sample	Cell Culture Supernates, Cell Lysates, Plasma (heparin, EDTA), Serum and Tissue Homogenates
Sample Volume	100 μ L
Label	HRP-conjugated
Detection Method	Colorimetric
Assay Type	Quantitative
Calibration Range	31.2 to 2000 pg/ml
Reactivity	Human
Regulation Status	For research use only (RUO)
Storage Instruction	Store at 4°C for 6 months, at -20°C for 12 months. Avoid multiple freeze-thaw cycles.

Applications

- Quantification

Gene Info — TNFRSF17

Entrez GeneID [608](#)

Gene Name TNFRSF17

Gene Alias BCM, BCMA, CD269

Gene Description tumor necrosis factor receptor superfamily, member 17

Omim ID [109545](#)

Gene Ontology [Hyperlink](#)

Gene Summary The protein encoded by this gene is a member of the TNF-receptor superfamily. This receptor is preferentially expressed in mature B lymphocytes, and may be important for B cell development and autoimmune response. This receptor has been shown to specifically bind to the tumor necrosis factor (ligand) superfamily, member 13b (TNFSF13B/TALL-1/BAFF), and to lead to NF-kappaB and MAPK8/JNK activation. This receptor also binds to various TRAF family members, and thus may transduce signals for cell survival and proliferation. [provided by RefSeq]

Other Designations B cell maturation antigen|B-cell maturation factor|OTTHUMP00000160261

Pathway

- [Cytokine-cytokine receptor interaction](#)

Disease

- [Arthritis](#)
- [Asthma](#)
- [Colitis](#)
- [Crohn Disease](#)
- [Genetic Predisposition to Disease](#)

- [Hematologic Diseases](#)
- [Kidney Failure](#)
- [Multiple Myeloma](#)
- [Occupational Diseases](#)