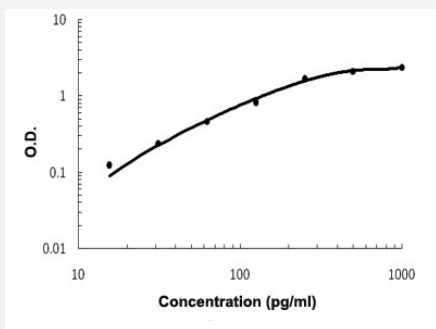


# Ccl4 (Rat) ELISA Kit

Catalog # KA3685      Size 1 Kit

## Applications



The standard curve is for the purpose of demonstration only and should not be used to calculate unknowns. A standard curve should be generated each time the assay is performed.

## Specification

<b>Product Description</b>	Ccl4 (Rat) is a sandwich enzyme immunoassay for the quantitative measurement of rat Ccl4.
<b>Suitable Sample</b>	Cell Culture Supernatant, Plasma (Heparin, EDTA), Serum
<b>Sample Volume</b>	100 ul
<b>Label</b>	HRP-conjugated
<b>Detection Method</b>	Colorimetric
<b>Assay Type</b>	Quantitative
<b>Calibration Range</b>	15.6 to 1000 pg/ml
<b>Reactivity</b>	Rat
<b>Regulation Status</b>	For research use only (RUO)
<b>Quality Control Testing</b>	Standard curve The standard curve is for the purpose of demonstration only and should not be used to calculate unknowns. A standard curve should be generated each time the assay is performed.
<b>Storage Instruction</b>	Store at 4°C for 6 months, at -20°C for 12 months. Avoid multiple freeze-thaw cycles.

## Applications

- Quantification

## Gene Info — Ccl4

Entrez GeneID	<a href="#">116637</a>
Gene Name	Ccl4
Gene Alias	Mip1-b, Scya4
Gene Description	chemokine (C-C motif) ligand 4
Gene Ontology	<a href="#">Hyperlink</a>
Other Designations	macrophage inflammatory protein-1 beta small inducible cytokine A4