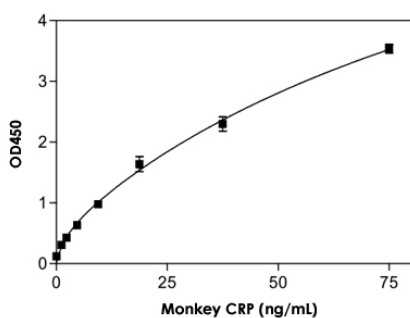


CRP (Monkey) ELISA Kit

Catalog # KA2447 Size 1 Kit

Applications



The standard curve is for the purpose of illustration only and should not be used to calculate unknowns. A standard curve should be generated each time the assay is performed.

Specification

Product Description	CRP (Monkey) ELISA Kit is for the quantitative measurement of CRP in serum.
Suitable Sample	Serum
Sample Volume	100 uL
Label	HRP-conjugated
Detection Method	Colorimetric
Assay Type	Quantitative
Calibration Range	1.17 to 75 ng/mL
Reactivity	Monkey
Regulation Status	For research use only (RUO)
Storage Instruction	Store Lyophilized Standard at -20°C. Store all other components at 4°C.

Applications

- Quantification

Gene Info — CRP

Entrez GeneID	719454
Gene Name	CRP
Gene Alias	-
Gene Description	C-reactive protein, pentraxin-related
Gene Ontology	Hyperlink
Gene Summary	-
Other Designations	-

Publication Reference

- [Monocyte and Alveolar Macrophage Skewing Is Associated with the Development of Pulmonary Arterial Hypertension in a Primate Model of HIV Infection.](#)

Schweitzer F, Tarantelli R, Rayens E, Kling H, Mattila JT, Norris KA.

AIDS Research and Human Retroviruses 2018 Oct; [Epub].

Application: Quant, Rhesus macaques, Bronchoalveolar lavage fluid, Plasma