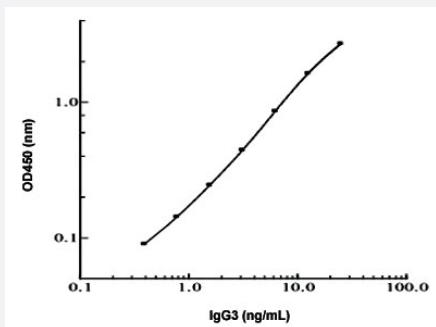


# IgG3 (Human) ELISA Kit

Catalog # KA1854      Size 1 Kit

## Applications



The standard curve is for the purpose of illustration only and should not be used to calculate unknowns. A standard curve should be generated each time the assay is performed.

## Specification

<b>Product Description</b>	IgG3 (Human) ELISA Kit is a sandwich enzyme immunoassay for the quantitative measurement of human IgG3.
<b>Suitable Sample</b>	Cell Culture Sample, CSF, Milk, Plasma, Saliva, Serum, Urine
<b>Sample Volume</b>	50 $\mu$ L
<b>Label</b>	Peroxidase-conjugated
<b>Detection Method</b>	Colorimetric
<b>Assay Type</b>	Quantitative
<b>Calibration Range</b>	0.391 to 25 ng/mL
<b>Reactivity</b>	Human
<b>Regulation Status</b>	For research use only (RUO)
<b>Storage Instruction</b>	Store SP Conjugate, biotinylated antibody and reconstituted standard at -20°C. Store all other components at 4°C. Avoid repeated freezing and thawing.

## Applications

- Quantification

## Publication Reference

- [Assessment of Selected Immune Parameters in Patients Undergoing Cardiac Surgery with the Use of Cardiopulmonary Bypass: Aspects of Age and Sex-A Pilot Study.](#)

Piotr Sinder, Ewa Kucewicz-Czech, Grażyna Wilczek.

Biomedicines 2023 Apr; 11(4):1224.

Application: Quant, Human, Human serum