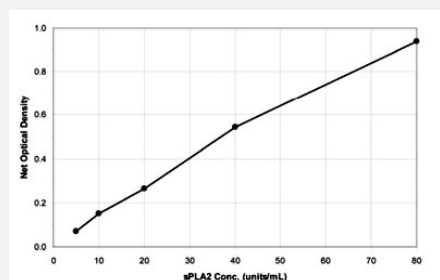


sPLA2 activity Kit

Catalog # KA1015 Size 1 Kit

Applications



The standard curve is for the purpose of illustration only and should not be used to calculate unknowns. A standard curve should be generated each time the assay is performed.

Specification

Product Description	sPLA2 activity Kit is a higher throughput assay for the quantitative measurement of sPLA2 in culture supernatants, cell lysates, and buffers from any species.
Suitable Sample	Cell Lysate, Culture Supernatant
Sample Volume	50 μ L
Detection Method	Colorimetric
Assay Type	Quantitative
Calibration Range	5 to 80 Units/mL
Regulation Status	For research use only (RUO)
Quality Control Testing	Standard curve The standard curve is for the purpose of illustration only and should not be used to calculate unknowns. A standard curve should be generated each time the assay is performed.
Storage Instruction	Store substrate at -20°C. Store all other components at 4°C.

Applications

- Quantification