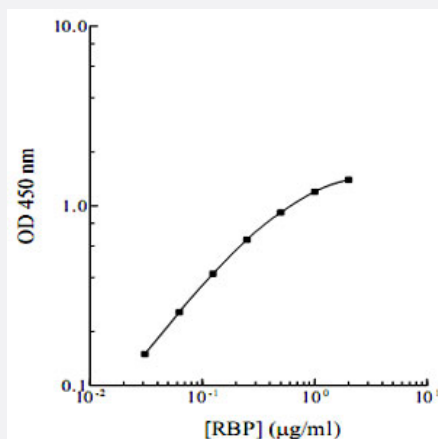


RENBP (Human) ELISA Kit

Catalog # KA0498

Size 1 Kit

Applications



The standard curve is for the purpose of illustration only and should not be used to calculate unknowns. A standard curve should be generated each time the assay is performed.

Specification

Product Description	RENBP (Human) ELISA Kit is a sandwich enzyme immunoassay for the quantitative measurement of human RENBP.
Suitable Sample	Cell Culture Supernatant, Urine
Sample Volume	50 µL
Label	Peroxidase-conjugated
Detection Method	Colorimetric
Assay Type	Quantitative
Intra-Assay	4.20%
Inter-Assay	7.10%
Spiking Recovery	98.50%
Calibration Range	0.031 to 2 ug/mL
Reactivity	Human

Regulation Status	For research use only (RUO)
Quality Control Testing	Standard curve The standard curve is for the purpose of illustration only and should not be used to calculate unknowns. A standard curve should be generated each time the assay is performed.
Storage Instruction	Store components of the kit at 4°C or -20°C as described in the protocol.

Applications

- Quantification

Gene Info — RENBP

Entrez GeneID	5973
Gene Name	RENBP
Gene Alias	RBP, RNBP
Gene Description	renin binding protein
Omim ID	312420
Gene Ontology	Hyperlink
Gene Summary	The gene product inhibits renin activity by forming a dimer with renin, a complex known as high molecular weight renin. The encoded protein contains a leucine zipper domain, which is essential for its dimerization with renin. The gene product can catalyze the interconversion of N-acetylglucosamine to N-acetylmannosamine, indicating that it is a GlcNAc 2-epimerase. Transcript variants utilizing alternative promoters have been described in the literature. [provided by RefSeq]
Other Designations	GlcNAc 2-epimerase N-acetyl-D-glucosamine 2-epimerase N-acetylglucosamine 2-epimerase OTTHUMP00000025998 OTTHUMP00000196204 renin-binding protein

Publication Reference

- [Urinary retinol excretion in children with acute watery diarrhoea.](#)

Mitra AK, Wahed MA, Chowdhury AK, Stephensen CB.

Journal of Health, Population, and Nutrition 2002 Mar; 20(1):12.

- [Urinary protein excretion in Type 2 diabetes with complications.](#)

Hong CY, Chia KS, Ling SL.

Journal of Diabetes and its Complications 2000 Sep; 14(5):259.

Application: Quant, Human, Human urine samples

- [Assessment of renal function in patients with multiple myeloma: the role of urinary proteins.](#)

Corso A, Serricchio G, Zappasodi P, Klersy C, Bosoni T, Moratti R, Castagnola C, Lazzarino M, Pagnucco G, Bernasconi C.

Annals of Hematology 1999 Aug; 78(8):371.

Application: Quant, Human, Human serum

Pathway

- [Amino sugar and nucleotide sugar metabolism](#)

Disease

- [Cardiovascular Diseases](#)
- [Diabetes Mellitus](#)
- [Edema](#)
- [Emergencies](#)
- [Hypertension](#)