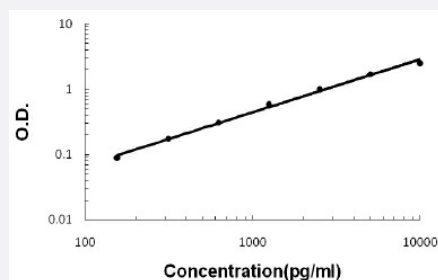


Vcam1 (Mouse) ELISA Kit

Catalog # KA0428 Size 1 Kit

Applications



The standard curve is for the purpose of illustration only and should not be used to calculate unknowns. A standard curve should be generated each time the assay is performed.

Specification

Product Description	Vcam1 (Mouse) ELISA Kit is a sandwich enzyme immunoassay for the quantitative measurement of mouse Vcam1.
Suitable Sample	Cell Culture Supernatant, Plasma (EDTA, Heparin), Serum
Sample Volume	100 μ L
Label	HRP-conjugated
Detection Method	Colorimetric
Assay Type	Quantitative
Calibration Range	156 to 10000 pg/mL
Reactivity	Mouse
Regulation Status	For research use only (RUO)
Quality Control Testing	Standard curve The standard curve is for the purpose of illustration only and should not be used to calculate unknowns. A standard curve should be generated each time the assay is performed.
Storage Instruction	Store at 4°C for 6 months, at -20°C for 12 months. Avoid multiple freeze-thaw cycles.

Applications

- Quantification

Gene Info — Vcam1

Entrez GeneID [22329](#)

Gene Name Vcam1

Gene Alias CD106, Vcam-1

Gene Description vascular cell adhesion molecule 1

Gene Ontology [Hyperlink](#)

Other Designations -

Publication Reference

- [Selective inhibition of cotranslational translocation of vascular cell adhesion molecule 1.](#)

Besemer J, Harant H, Wang S, Oberhauser B, Marquardt K, Foster CA, Schreiner EP, de Vries JE, Dascher-Nadel C, Lindley IJ.

Nature 2005 Jul; 436(7048):290.

- [Integrin alpha4beta1-VCAM-1-mediated adhesion between endothelial and mural cells is required for blood vessel maturation.](#)

Garmy-Susini B, Jin H, Zhu Y, Sung RJ, Hwang R, Varner J.

Journal of Clinical Investigation 2005 Jun; 115(6):1542.

- [Gene structure, chromosomal location, and basis for alternative mRNA splicing of the human VCAM1 gene.](#)

Cybulsky MI, Fries JW, Williams AJ, Sultan P, Eddy R, Byers M, Shows T, Gimbrone MA Jr, Collins T.

PNAS 1991 Sep; 88(17):7859.