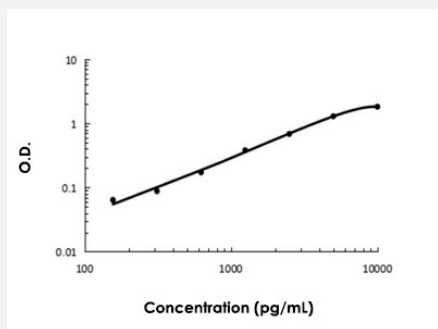


Laminin (Rat) ELISA Kit

Catalog # KA0379

Size 1 Kit

Applications



The standard curve is for the purpose of illustration only and should not be used to calculate unknowns. A standard curve should be generated each time the assay is performed.

Specification

Product Description	Laminin (Rat) ELISA Kit is a sandwich enzyme immunoassay for the quantitative measurement of rat laminin.
Suitable Sample	Cell Culture Supernatant, Plasma (EDTA, Heparin), Serum
Sample Volume	100 uL
Label	HRP-conjugated
Detection Method	Colorimetric
Assay Type	Quantitative
Calibration Range	156 to 10000 pg/mL
Reactivity	Rat
Regulation Status	For research use only (RUO)
Quality Control Testing	Standard curve The standard curve is for the purpose of illustration only and should not be used to calculate unknowns. A standard curve should be generated each time the assay is performed.
Storage Instruction	Store at 4°C for 6 months, at -20°C for 12 months. Avoid multiple freeze-thaw cycles.

Applications

- Quantification

Publication Reference

- [Molecular cloning of the cDNA encoding human laminin A chain.](#)
Haaparanta T, Uitto J, Ruoslahti E, Engvall E.
Matrix 1991 Jun; 11(3):151.
- [Human laminin A chain \(LAMA\) gene: chromosomal mapping to locus 18p11.3.](#)
Nagayoshi T, Mattei MG, Passage E, Knowlton R, Chu ML, Uitto J.
Genomics 1989 Nov; 5(4):932.
- [Sequence of the cDNA encoding the laminin B1 chain reveals a multidomain protein containing cysteine-rich repeats.](#)
Sasaki M, Kato S, Kohno K, Martin GR, Yamada Y.
PNAS 1987 Feb; 84(4):935.