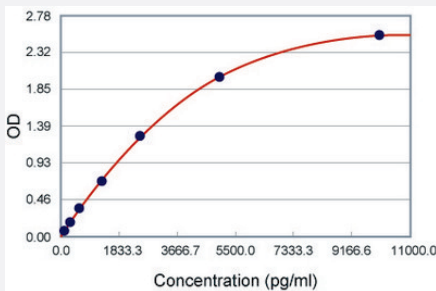


# Icam1 (Mouse) ELISA Kit

Catalog # KA0345      Size 1 Kit

## Applications



The standard curve is for the purpose of illustration only and should not be used to calculate unknowns. A standard curve should be generated each time the assay is performed.

## Specification

<b>Product Description</b>	Icam1 (Mouse) ELISA Kit is a sandwich enzyme immunoassay for the quantitative measurement of mouse Icam1.
<b>Suitable Sample</b>	Cell Culture Supernatant, Plasma (heparin, EDTA), Serum, Tissue Homogenates
<b>Sample Volume</b>	100 uL
<b>Label</b>	HRP-conjugated
<b>Detection Method</b>	Colorimetric
<b>Assay Type</b>	Quantitative
<b>Calibration Range</b>	156 to 10000 pg/mL
<b>Reactivity</b>	Mouse
<b>Regulation Status</b>	For research use only (RUO)
<b>Storage Instruction</b>	Store at 4°C for 6 months, at -20°C for 12 months. Avoid multiple freeze-thaw cycles.

## Applications

- Quantification

## Gene Info — Icam1

Entrez GeneID	<a href="#">15894</a>
Gene Name	Icam1
Gene Alias	CD54, Icam-1, Ly-47, MALA-2, MGC6195
Gene Description	intercellular adhesion molecule 1
Gene Ontology	<a href="#">Hyperlink</a>
Other Designations	intercellular adhesion molecule

## Publication Reference

- [The structure of the two amino-terminal domains of human ICAM-1 suggests how it functions as a rhinovirus receptor and as an LFA-1 integrin ligand.](#)

Bella J, Kolatkar PR, Marlor CW, Greve JM, Rossmann MG.  
PNAS 1998 Apr; 95(8):4140.
- [Assignment of the gene for intercellular adhesion molecule-1 \(Icam-1\) to proximal mouse chromosome 9.](#)

Ballantyne CM, Kozak CA, O'Brien WE, Beaudet AL.  
Genomics 1991 Mar; 9(3):547.
- [ICAM, an adhesion ligand of LFA-1, is homologous to the neural cell adhesion molecule NCAM.](#)

Simmons D, Makgoba MW, Seed B.  
Nature 1988 Feb; 331(6157):624.