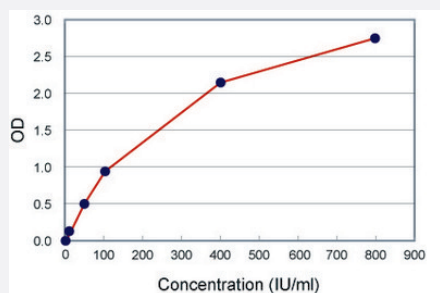


# IgE (Human) ELISA Kit

Catalog # KA0216      Size 1 Kit

## Applications



The standard curve is for the purpose of illustration only and should not be used to calculate unknowns. A standard curve should be generated each time the assay is performed.

## Specification

<b>Product Description</b>	IgE (Human) ELISA Kit is a sandwich enzyme immunoassay for the quantitative measurement of IgE.
<b>Suitable Sample</b>	Serum
<b>Sample Volume</b>	20 uL
<b>Label</b>	HRP-conjugate
<b>Detection Method</b>	Colorimetric
<b>Assay Type</b>	Quantitative
<b>Intra-Assay</b>	5.60%
<b>Inter-Assay</b>	6.00%
<b>Spiking Recovery</b>	98.00%
<b>Calibration Range</b>	0 to 800 IU/mL
<b>Limit of Detection</b>	5 IU/mL
<b>Reactivity</b>	Human
<b>Regulation Status</b>	For research use only (RUO)

**Quality Control Testing**

## Standard curve

The standard curve is for the purpose of illustration only and should not be used to calculate unknowns. A standard curve should be generated each time the assay is performed.

**Storage Instruction**

Store the kit at 4°C.

## Applications

- Quantification

## Publication Reference

- [Iridium nanoclusters as high sensitive-tunable elemental labels for immunoassays: Determination of IgE and APOE in aqueous humor by inductively coupled plasma-mass spectrometry.](#)

Paula Menero-Valdés, Ana Lores-Padín, Beatriz Fernández, Héctor González-Iglesias, Rosario Pereiro.

Talanta 2022 Jul; 244:123424.

Application: Quant, Human, Human serum

- [IL-35 and IL-37 are negatively correlated with high IgE production among children with asthma in Saudi Arabia.](#)

Amir Abushouk, Hamad Alkhalaf, Moniraa Aldamegh, Shehana Bin shigair, Nadin Mahabbat, Maumonah Hakami, Ahmad Saleh Abu-Jaffal and Amre Nasr.

The Journal of Asthma 2022 Apr; 59(4):655.

Application: ELISA, Human, Human serum

- [Bimodal determination of immunoglobulin E by fluorometry and ICP-MS by using platinum nanoclusters as a label in an immunoassay.](#)

Lores-Padín A, Cruz-Alonso M, González-Iglesias H, Fernández B, Pereiro R.

Mikrochimica Acta 2019 Oct; 186(11):705.

Application: Quant, Human, Commercial human serum

- [Functionalized gold nanoclusters as fluorescent labels for immunoassays: Application to human serum immunoglobulin E determination.](#)

Alonso MC, Trapiella-Alfonso L, Fernandez JMC, Pereiro R, Sanz-Medel A.

Biosensors & Bioelectronics 2016 Mar; 77:1055.

Application: ELISA, Human, Serum

- [Component-resolved diagnostic of cow's milk allergy by immunoaffinity capillary electrophoresis - matrix assisted laser desorption/ionization mass spectrometry.](#)

Gasilova N, Girault HH.

Analytical Chemistry 2014 Jul; 86(13):6337.

Application: ELISA, Human, Serum

- [Polymorphisms in the promoter of the CD14 gene and their associations with susceptibility to pulmonary tuberculosis.](#)

Xue Y, Zhao ZQ, Chen F, Zhang L, Li GD, Ma KW, Bai XF, Zuo YJ.

Tissue Antigens 2012 Nov; 80(5):437.

Application: Quant, Human, Serum were obtained from patients before anti-TB treatment