

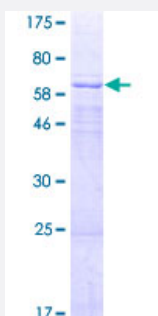
Full-Length

AADACL2 (Human) Recombinant Protein (P01)

Catalog # H00344752-P01

Size 25 ug, 10 ug

Applications



Specification

Product Description

Human AADACL2 full-length ORF (NP_997248.1, 1 a.a. - 379 a.a.) recombinant protein with GST-tag at N-terminal.

Sequence

MPDNIEESWKIMALDAIAKTCTFTAMCFENMRIMRYEEFISMIFRLDYTQPLSDEYITVTDTTFVDIPV
 RLYLPKRKSETRRRAVYFHGGGFCFGSSKQRAFDLNRWTANTLDAVVVGVDYRLAPQHHPA
 QFEDGLAAVKFFLLEKILTKYGVDPTRICISGDSSGGNLATAVTQQVQND AEIKHKIKMQVLLYPGL
 QITDSYLP SHRENEHGIVL TRDVAIKLVSLYFTKDEALPWAMRRNQHMPLESRHLFKFVNWSILLPE
 KYRKDYYTEPILGGLSYSLPGLTDSRALPLLANDSQLQNLPLTYILTCQHDLRLDDGLMYVTRLRN
 VGVQVVHEHIEDGIHGALSFMTPFYLRGLRIRDMYVSWLDKNL

Host

Wheat Germ (in vitro)

Theoretical MW (kDa)

70.1

Interspecies Antigen Sequence

Mouse (80); Rat (79)

Preparation Method

[in vitro wheat germ expression system](#)

Purification

Glutathione Sepharose 4 Fast Flow

Quality Control Testing

12.5% SDS-PAGE Stained with Coomassie Blue.

Storage Buffer

50 mM Tris-HCl, 10 mM reduced Glutathione, pH=8.0 in the elution buffer.

Storage Instruction Store at -80°C. Aliquot to avoid repeated freezing and thawing.

Note Best use within three months from the date of receipt of this protein.

Applications

- Enzyme-linked Immunoabsorbent Assay
- Western Blot (Recombinant protein)
- Antibody Production
- Protein Array

Gene Info — AADACL2

Entrez GeneID [344752](#)

GeneBank Accession# [NM_207365.1](#)

Protein Accession# [NP_997248.1](#)

Gene Name AADACL2

Gene Alias MGC72001

Gene Description arylacetamide deacetylase-like 2

Gene Ontology [Hyperlink](#)

Other Designations -