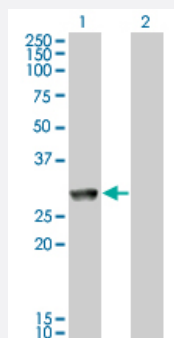


MGC40579 monoclonal antibody (M11), clone 2C11

Catalog # H00256356-M11

Size 100 ug

Applications

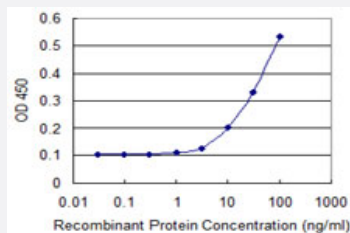


Western Blot (Transfected lysate)

Western Blot analysis of MGC40579 expression in transfected 293T cell line by MGC40579 monoclonal antibody (M11), clone 2C11.

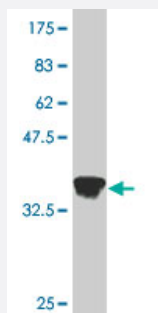
Lane 1: MGC40579 transfected lysate(33.9 KDa).

Lane 2: Non-transfected lysate.



Sandwich ELISA (Recombinant protein)

Detection limit for recombinant GST tagged GK5 is 3 ng/ml as a capture antibody.



Western Blot detection against Immunogen (35.53 KDa) .

Specification

Product Description

Mouse monoclonal antibody raised against a partial recombinant MGC40579.

Immunogen	MGC40579 (NP_689989, 1 a.a. ~ 89 a.a) partial recombinant protein with GST tag. MW of the GST tag alone is 26 KDa.
Sequence	MSGLLTDPEQRAQEPRYPGFVLGLDVGSSVIRCHVYDRAARVCGSSVQKVENLYPQIGWVEIDP DVLWIQFVAVIKEAVKAAGIQMNQI
Host	Mouse
Reactivity	Human
Isotype	IgG2a Kappa
Quality Control Testing	Antibody Reactive Against Recombinant Protein. Western Blot detection against Immunogen (35.53 KDa) .
Storage Buffer	In 1x PBS, pH 7.4
Storage Instruction	Store at -20°C or lower. Aliquot to avoid repeated freezing and thawing.

Applications

- Western Blot (Transfected lysate)

Western Blot analysis of MGC40579 expression in transfected 293T cell line by MGC40579 monoclonal antibody (M11), clone 2C11.

Lane 1: MGC40579 transfected lysate(33.9 KDa).

Lane 2: Non-transfected lysate.

[Protocol Download](#)

- Sandwich ELISA (Recombinant protein)

Detection limit for recombinant GST tagged GK5 is 3 ng/ml as a capture antibody.

[Protocol Download](#)

- ELISA

Gene Info — GK5

Entrez GeneID	256356
GeneBank Accession#	NM_152776
Protein Accession#	NP_689989

Gene Name	GK5
Gene Alias	FLJ33582, FLJ45739, MGC40579
Gene Description	glycerol kinase 5 (putative)
Gene Ontology	Hyperlink
Other Designations	-