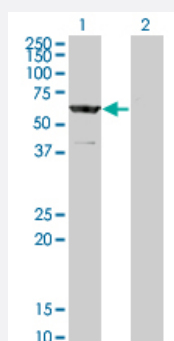


# CCT8L2 monoclonal antibody (M12), clone 2C9

Catalog # H00150160-M12

Size 100 ug

## Applications



### Western Blot (Transfected lysate)

Western Blot analysis of CESK1 expression in transfected 293T cell line by CESK1 monoclonal antibody (M12), clone 2C9.

Lane 1: CESK1 transfected lysate(59.4 KDa).

Lane 2: Non-transfected lysate.

## Specification

### Product Description

Mouse monoclonal antibody raised against a full length recombinant CCT8L2.

### Immunogen

CCT8L2 (AAH33797, 1 a.a. ~ 557 a.a) full-length recombinant protein with GST tag. MW of the GST tag alone is 26 KDa.

### Sequence

MDSTVPSALELPQRLALNPRESPRSPEEEEPHLLSSLAAVQTLASVIRPCYGPHGQRQKFLVMTMKG  
ETVCTGCATAILRALELEHPPAAWLLREAGQTQAENSGDGTAFVLLTEALLEQAEQLLKAGLPRP  
QLREAYATATAEVLATLPSLAIQSLGPLEDPSWALHSMNTHLSPMDHLTKLVAHACWAIKELD  
GSFKPERVGVICALPGGTLEDSCLLPGLAISGKLCGQMATVLSGARVALFACPFPGAHPNAPATA  
RLSSPADLAQFSKGSQDQLEKQVQQLAAAGINAVVVLGEVDEETLTLADKYGIVVIQARSWMEIYL  
SEVLDTPLLPRLLPPQRPQKQVYRQELGDGLAVVFEWECTGTPALTVVLRGATTQGLRSAEQ  
AVYHGIDAYQLCQDPRIPGAGATEMALAKMLSDKGSRLGPGSPAFLAFWALKYLPKTLAEN  
AGLAVSDVMAEMSGVHQGNLLMGVGTGIIINVAQEGVWDTLVKAQGFRAVAEVLQLVTVDEI  
VVAKKSPTHQEMNPDSKKTKKHPPPVETKKILGLNN

### Host

Mouse

### Reactivity

Human

### Isotype

IgG2a Kappa

### Quality Control Testing

Antibody Reactive Against Recombinant Protein.

<b>Storage Buffer</b>	In 1x PBS, pH 7.4
<b>Storage Instruction</b>	Store at -20°C or lower. Aliquot to avoid repeated freezing and thawing.

## Applications

- Western Blot (Transfected lysate)

Western Blot analysis of CESK1 expression in transfected 293T cell line by CESK1 monoclonal antibody (M12), clone 2C9.

Lane 1: CESK1 transfected lysate(59.4 KDa).

Lane 2: Non-transfected lysate.

[Protocol Download](#)

- ELISA

## Gene Info — CCT8L2

<b>Entrez GeneID</b>	<a href="#">150160</a>
<b>GeneBank Accession#</b>	<a href="#">BC033797</a>
<b>Protein Accession#</b>	<a href="#">AAH33797</a>
<b>Gene Name</b>	CCT8L2
<b>Gene Alias</b>	CESK1, MGC118839, MGC118840
<b>Gene Description</b>	chaperonin containing TCP1, subunit 8 (theta)-like 2
<b>Gene Ontology</b>	<a href="#">Hyperlink</a>
<b>Gene Summary</b>	O
<b>Other Designations</b>	OTTHUMP00000180627 T-complex protein 1