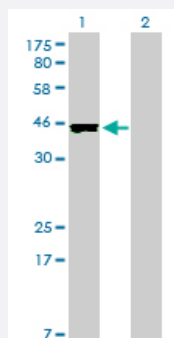


# CREB3L4 monoclonal antibody (M01), clone 3E3

Catalog # H00148327-M01

Size 100 ug

## Applications

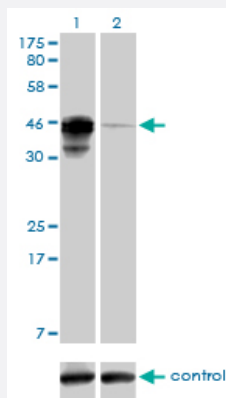


### Western Blot (Transfected lysate)

Western Blot analysis of CREB3L4 expression in transfected 293T cell line by CREB3L4 monoclonal antibody (M01), clone 3E3.

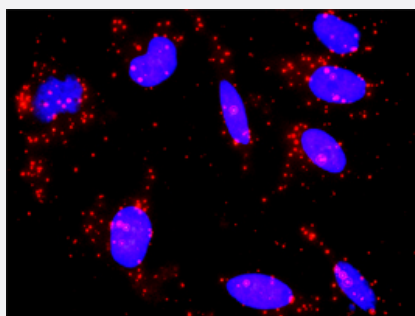
Lane 1: CREB3L4 transfected lysate(43.4 KDa).

Lane 2: Non-transfected lysate.



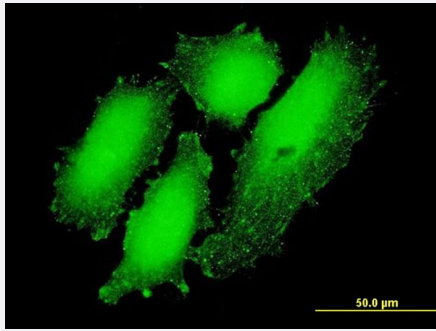
### RNAi Knockdown (Antibody validated)

Western blot analysis of CREB3L4 over-expressed 293 cell line, cotransfected with CREB3L4 Validated Chimera RNAi ( Cat # H00148327-R01V ) (Lane 2) or non-transfected control (Lane 1). Blot probed with CREB3L4 monoclonal antibody (M01), clone 3E3 (Cat # H00148327-M01 ). GAPDH ( 36.1 kDa ) used as specificity and loading control.



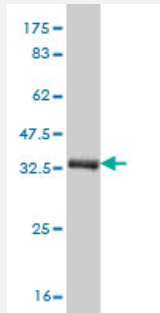
### In situ Proximity Ligation Assay (Cell)

Proximity Ligation Analysis of protein-protein interactions between CREB3 and CREB3L4. HeLa cells were stained with anti-CREB3 rabbit purified polyclonal 1:1200 and anti-CREB3L4 mouse monoclonal antibody 1:50. Each red dot represents the detection of protein-protein interaction complex, and nuclei were counterstained with DAPI (blue).



## Immunofluorescence

Immunofluorescence of monoclonal antibody to CREB3L4 on HeLa cell .  
[antibody concentration 10 ug/ml]



Western Blot detection against Immunogen (37.84 KDa) .

## Specification

<b>Product Description</b>	Mouse monoclonal antibody raised against a partial recombinant CREB3L4.
<b>Immunogen</b>	CREB3L4 (NP_570968, 1 a.a. ~ 110 a.a) partial recombinant protein with GST tag. MW of the GST tag alone is 26 KDa.
<b>Sequence</b>	MDLGIPDLLDAWLEPPEDIFSTGSLVLELGLHCPPPEVPVTRLQEQGLQGWSGGDRGCGLQES EPEDFLKLFIDPNEVYCSEASPGSDSGISEDPCHPDSPAPRATSSP
<b>Host</b>	Mouse
<b>Reactivity</b>	Human
<b>Isotype</b>	IgG2a Kappa
<b>Quality Control Testing</b>	Antibody Reactive Against Recombinant Protein. Western Blot detection against Immunogen (37.84 KDa) .
<b>Storage Buffer</b>	In 1x PBS, pH 7.4
<b>Storage Instruction</b>	Store at -20°C or lower. Aliquot to avoid repeated freezing and thawing.

## Applications

- Western Blot (Transfected lysate)

Western Blot analysis of CREB3L4 expression in transfected 293T cell line by CREB3L4 monoclonal antibody (M01), clone 3E3.

Lane 1: CREB3L4 transfected lysate(43.4 KDa).

Lane 2: Non-transfected lysate.

[Protocol Download](#)

- Western Blot (Recombinant protein)

[Protocol Download](#)

- ELISA

- RNAi Knockdown (Antibody validated)

Western blot analysis of CREB3L4 over-expressed 293 cell line, cotransfected with CREB3L4 Validated Chimera RNAi ( Cat # H00148327-R01V ) (Lane 2) or non-transfected control (Lane 1). Blot probed with CREB3L4 monoclonal antibody (M01), clone 3E3 (Cat # H00148327-M01 ). GAPDH ( 36.1 kDa ) used as specificity and loading control.

[Protocol Download](#)

- In situ* Proximity Ligation Assay (Cell)

Proximity Ligation Analysis of protein-protein interactions between CREB3 and CREB3L4. HeLa cells were stained with anti-CREB3 rabbit purified polyclonal 1:1200 and anti-CREB3L4 mouse monoclonal antibody 1:50. Each red dot represents the detection of protein-protein interaction complex, and nuclei were counterstained with DAPI (blue).

- Immunofluorescence

Immunofluorescence of monoclonal antibody to CREB3L4 on HeLa cell . [antibody concentration 10 ug/ml]

## Gene Info — CREB3L4

Entrez GeneID [148327](#)

GeneBank Accession# [NM\\_130898](#)

Protein Accession# [NP\\_570968](#)

Gene Name CREB3L4

Gene Alias AIBZIP, ATCE1, CREB3, CREB4, JAL, hJAL

Gene Description cAMP responsive element binding protein 3-like 4

Omim ID [607138](#)

**Gene Ontology**[Hyperlink](#)**Gene Summary**

cAMP response element-binding (CREB) proteins are a family of mammalian transcription activators. For further background information on CREB proteins, see CREB1 (MIM 123810).[supplied by OMIM]

**Other Designations**

OTTHUMP00000035264|OTTHUMP00000035265|OTTHUMP00000035266|androgen-induced basic leucine zipper|cAMP responsive element binding protein 1

## Pathway

- [Melanogenesis](#)
- [Prostate cancer](#)