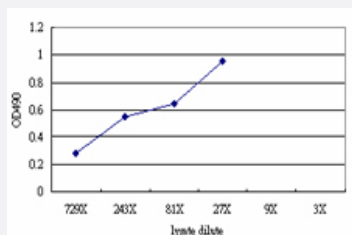


ACTRT2 (Human) Matched Antibody Pair

Catalog # H00140625-AP51

Size 1 Set

Applications



Sandwich ELISA detection sensitivity ranging from approximately 729x to 3x dilution of the ACTRT2 293T overexpression lysate (non-denatured).

Specification

Product Description

This antibody pair set comes with a matched antibody pair to detect and quantify the protein level of human ACTRT2.

Reactivity

Human

Quality Control Testing

Standard curve using ACTRT2 293T overexpression lysate (non-denatured) as an analyte. Sandwich ELISA detection sensitivity ranging from approximately 729x to 3x dilution of the ACTRT2 293T overexpression lysate (non-denatured).

Supplied Product

Antibody pair set content:

1. Capture antibody: mouse monoclonal anti-ACTRT2 (100 ug)
2. Detection antibody: rabbit purified polyclonal anti-ACTRT2 (50 ug)

*Reagents are sufficient for at least 3-5 x 96 well plates using recommended protocols.

Storage Instruction

Store reagents of the antibody pair set at -20°C or lower. Please aliquot to avoid repeated freeze thaw cycle. Reagents should be returned to -20°C storage immediately after use.

Applications

- ELISA Pair (Transfected lysate)

[Protocol Download](#)

Gene Info — ACTRT2

Entrez GeneID [140625](#)**Gene Name** ACTRT2**Gene Alias** ARPM2, ARPT2, Arp-T2, FLJ25424, HARPM2**Gene Description** actin-related protein T2**Omim ID** [608535](#)**Gene Ontology** [Hyperlink](#)

Gene Summary The protein encoded by this intronless gene belongs to the actin family. Studies have shown that this protein may be involved in cytoskeletal organization similar to other cytoplasmic actin-related protein (ARP) subfamily members. Antibody raised against the human protein has been used to detect the protein by immunoblotting and immunofluorescence microscopy, demonstrating its specific synthesis in the testis, late in spermatid differentiation, and its localization in the calyx. [provided by RefSeq]

Other Designations OTTHUMP00000000569|actin-related protein M2|actin-related protein hArpM2