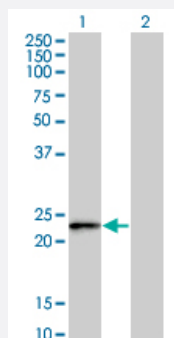


FBXO36 monoclonal antibody (M02), clone 3D3

Catalog # H00130888-M02

Size 100 ug

Applications

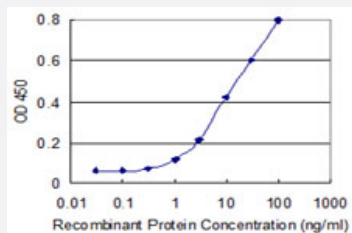


Western Blot (Transfected lysate)

Western Blot analysis of FBXO36 expression in transfected 293T cell line by FBXO36 monoclonal antibody (M02), clone 3D3.

Lane 1: FBXO36 transfected lysate (22.1 KDa).

Lane 2: Non-transfected lysate.



Sandwich ELISA (Recombinant protein)

Detection limit for recombinant GST tagged FBXO36 is 0.3 ng/ml as a capture antibody.



Western Blot detection against Immunogen (36.74 KDa) .

Specification

Product Description

Mouse monoclonal antibody raised against a partial recombinant FBXO36.

Immunogen	FBXO36 (NP_777559, 66 a.a. ~ 165 a.a) partial recombinant protein with GST tag. MW of the GST tag alone is 26 KDa.
Sequence	HLQQQTALIFGARILDYVINFCCKGKFDLERLSDDLLLTII SYLDLEDIARLCQTSHRFAKLCMSDKLW EQIVQSTCDTITPDVRALAEDTGWRQLFFTN
Host	Mouse
Reactivity	Human
Isotype	IgG2a Kappa
Quality Control Testing	Antibody Reactive Against Recombinant Protein. Western Blot detection against Immunogen (36.74 KDa) .
Storage Buffer	In 1x PBS, pH 7.4
Storage Instruction	Store at -20°C or lower. Aliquot to avoid repeated freezing and thawing.

Applications

- Western Blot (Transfected lysate)

Western Blot analysis of FBXO36 expression in transfected 293T cell line by FBXO36 monoclonal antibody (M02), clone 3D3.

Lane 1: FBXO36 transfected lysate(22.1 KDa).

Lane 2: Non-transfected lysate.

[Protocol Download](#)

- Western Blot (Recombinant protein)

[Protocol Download](#)

- Sandwich ELISA (Recombinant protein)

Detection limit for recombinant GST tagged FBXO36 is 0.3 ng/ml as a capture antibody.

[Protocol Download](#)

- ELISA

Gene Info — FBXO36

Entrez GeneID [130888](#)

GeneBank Accession# [NM_174899](#)

Protein Accession#	NP_777559
Gene Name	FBXO36
Gene Alias	FLJ37592, FLJ41090, Fbx36
Gene Description	F-box protein 36
Omim ID	609105
Gene Ontology	Hyperlink
Gene Summary	Members of the F-box protein family, such as FBXO36, are characterized by an approximately 40 -amino acid F-box motif. SCF complexes, formed by SKP1 (MIM 601434), cullin (see CUL1; MIM 603134), and F-box proteins, act as protein-ubiquitin ligases. F-box proteins interact with SKP1 through the F box, and they interact with ubiquitination targets through other protein interaction domains (Jin et al., 2004 [PubMed 15520277]).[supplied by OMIM]
Other Designations	F-box only protein 36

Disease

- [Tobacco Use Disorder](#)