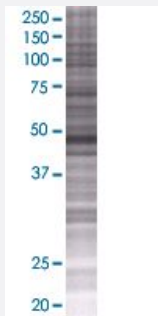


# LRG1 293T Cell Transient Overexpression Lysate(Denatured)

Catalog # H00116844-T01

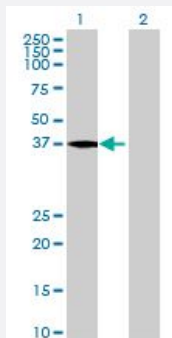
Size 100 uL

## Applications



### SDS-PAGE Gel

LRG1 transfected lysate.



### Western Blot

Lane 1: LRG1 transfected lysate ( 38.2 KDa)

Lane 2: Non-transfected lysate.

## Specification

Transfected Cell Line	293T
Plasmid	pCMV-LRG1 full-length
Host	Human
Theoretical MW (kDa)	38.2
Interspecies Antigen Sequence	Mouse (66); Rat (64)

**Quality Control Testing**

Transient overexpression cell lysate was tested with Anti-LRG1 antibody ([H00116844-B01](#)) by Western Blots.  
SDS-PAGE Gel  
LRG1 transfected lysate.  
Western Blot  
Lane 1: LRG1 transfected lysate ( 38.2 KDa)  
Lane 2: Non-transfected lysate.

**Storage Buffer**

1X Sample Buffer (50 mM Tris-HCl, 2% SDS, 10% glycerol, 300 mM 2-mercaptoethanol, 0.01% Bromophenol blue)

**Storage Instruction**

Store at -80°C. Aliquot to avoid repeated freezing and thawing.

## Applications

- Western Blot

## Gene Info — LRG1

**Entrez GeneID**[116844](#)**GeneBank Accession#**[BC034389](#)**Protein Accession#**[AAH34389](#)**Gene Name**

LRG1

**Gene Alias**

HMFT1766, LRG

**Gene Description**

leucine-rich alpha-2-glycoprotein 1

**Omim ID**[611289](#)**Gene Ontology**[Hyperlink](#)**Gene Summary**

The leucine-rich repeat (LRR) family of proteins, including LRG1, have been shown to be involved in protein-protein interaction, signal transduction, and cell adhesion and development. LRG1 is expressed during granulocyte differentiation (O'Donnell et al., 2002 [PubMed 12223515]).[supplied by OMIM]

**Other Designations**

1300008B03Rik|2310031E04Rik|leucine rich alpha 2 glycoprotein