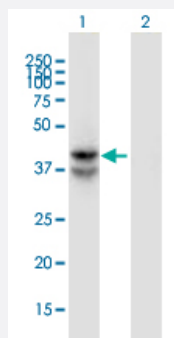


LDHAL6B monoclonal antibody (M01), clone 1A3

Catalog # H00092483-M01

Size 100 ug

Applications

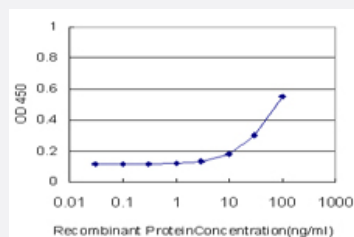


Western Blot (Transfected lysate)

Western Blot analysis of LDHAL6B expression in transfected 293T cell line by LDHAL6B monoclonal antibody (M01), clone 1A3.

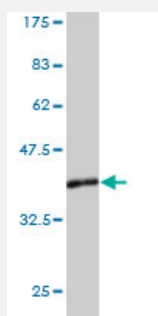
Lane 1: LDHAL6B transfected lysate (Predicted MW: 42 KDa).

Lane 2: Non-transfected lysate.



Sandwich ELISA (Recombinant protein)

Detection limit for recombinant GST tagged LDHAL6B is approximately 3ng/ml as a capture antibody.



Western Blot detection against Immunogen (36.74 KDa) .

Specification

Product Description

Mouse monoclonal antibody raised against a partial recombinant LDHAL6B.

Immunogen	LDHAL6B (NP_005497, 282 a.a. ~ 381 a.a) partial recombinant protein with GST tag. MW of the GST tag alone is 26 KDa.
Sequence	EVTATAYEIIKMKGYTSWAIGLSVADLTESILKNLRRHPVSTITKGLYGIDEEVFLSIPCILGENGITNLIKIKLTPEEEAHLKKSATKLWEIQNKLLKL
Host	Mouse
Reactivity	Human
Interspecies Antigen Sequence	Mouse (69); Rat (72)
Isotype	IgG2b Kappa
Quality Control Testing	Antibody Reactive Against Recombinant Protein. Western Blot detection against Immunogen (36.74 KDa) .
Storage Buffer	In 1x PBS, pH 7.4
Storage Instruction	Store at -20°C or lower. Aliquot to avoid repeated freezing and thawing.

Applications

- Western Blot (Transfected lysate)

Western Blot analysis of LDHAL6B expression in transfected 293T cell line by LDHAL6B monoclonal antibody (M01), clone 1A3.

Lane 1: LDHAL6B transfected lysate (Predicted MW: 42 KDa).

Lane 2: Non-transfected lysate.

[Protocol Download](#)

- Western Blot (Recombinant protein)

[Protocol Download](#)

- Sandwich ELISA (Recombinant protein)

Detection limit for recombinant GST tagged LDHAL6B is approximately 3ng/ml as a capture antibody.

[Protocol Download](#)

- ELISA

Gene Info — LDHAL6B

Entrez GeneID	92483
GeneBank Accession#	NM_033195
Protein Accession#	NP_005497
Gene Name	LDHAL6B
Gene Alias	LDHAL6, LDHL
Gene Description	lactate dehydrogenase A-like 6B
Gene Ontology	Hyperlink
Other Designations	lactate dehydrogenase A -like lactate dehydrogenase A-like 6

Pathway

- [Cysteine and methionine metabolism](#)
- [Glycolysis / Gluconeogenesis](#)
- [Metabolic pathways](#)
- [Propanoate metabolism](#)
- [Pyruvate metabolism](#)