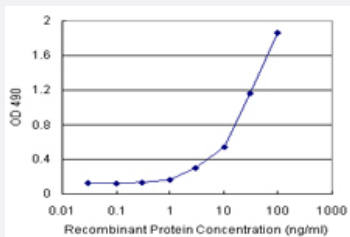


ABCC10 (Human) Matched Antibody Pair

Catalog # H00089845-AP21 Size 1 Set

Applications



Sandwich ELISA detection sensitivity ranging from 1 ng/ml to 100 ng/ml.

Specification

Product Description	This antibody pair set comes with a matched antibody pair to detect and quantify the protein level of human ABCC10.
Reactivity	Human
Quality Control Testing	Standard curve using recombinant protein (H00089845-P01) as an analyte. Sandwich ELISA detection sensitivity ranging from 1 ng/ml to 100 ng/ml.
Supplied Product	Antibody pair set content: 1. Capture antibody: rabbit MaxPab® affinity purified polyclonal anti-ABCC10 (100 ug) 2. Detection antibody: mouse purified polyclonal anti-ABCC10 (20 ug) *Reagents are sufficient for at least 1-2 x 96 well plates using recommended protocols.
Storage Instruction	Store reagents of the antibody pair set at -20°C or lower. Please aliquot to avoid repeated freeze thaw cycle. Reagents should be returned to -20°C storage immediately after use.

Applications

- ELISA Pair (Recombinant protein)

[Protocol Download](#)

Gene Info — ABCC10

Entrez GeneID [89845](#)**Gene Name** ABCC10**Gene Alias** EST182763, MRP7, SIMRP7**Gene Description** ATP-binding cassette, sub-family C (CFTR/MRP), member 10**Gene Ontology** [Hyperlink](#)

Gene Summary The protein encoded by this gene is a member of the superfamily of ATP-binding cassette (ABC) transporters. ABC proteins transport various molecules across extra- and intra-cellular membranes. ABC genes are divided into seven distinct subfamilies (ABC1, MDR/TAP, MRP, ALD, OABP, GCN20, and White). This ABC full-transporter is a member of the MRP subfamily which is involved in multi-drug resistance. Alternative splicing of this gene results in multiple transcript variants; however, not all variants have been fully described. [provided by RefSeq]

Other Designations ATP-binding cassette, sub-family C, member 10|multidrug resistance-associated protein 7

Pathway

- [ABC transporters](#)