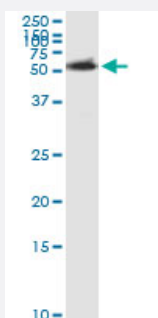


ACCS (Human) IP-WB Antibody Pair

Catalog # H00084680-PW1

Size 1 Set

Applications



Immunoprecipitation of ACCS transfected lysate using rabbit polyclonal anti-ACCS and Protein A Magnetic Bead ([U0007](#)), and immunoblotted with mouse purified polyclonal anti-ACCS.

Specification

Product Description	This IP-WB antibody pair set comes with one antibody for immunoprecipitation and another to detect the precipitated protein in western blot.
Reactivity	Human
Interspecies Antigen Sequence	Mouse (84); Rat (83)
Quality Control Testing	Immunoprecipitation-Western Blot (IP-WB) Immunoprecipitation of ACCS transfected lysate using rabbit polyclonal anti-ACCS and Protein A Magnetic Bead (U0007), and immunoblotted with mouse purified polyclonal anti-ACCS.
Supplied Product	Antibody pair set content: 1. Antibody pair for IP: rabbit polyclonal anti-ACCS (300 ul) 2. Antibody pair for WB: mouse purified polyclonal anti-ACCS (50 ug)
Storage Instruction	Store reagents of the antibody pair set at -20°C or lower. Please aliquot to avoid repeated freeze thaw cycle. Reagents should be returned to -20°C storage immediately after use.

Applications

- Immunoprecipitation-Western Blot

[Protocol Download](#)

Gene Info — ACCS

Entrez GeneID	84680
Gene Name	ACCS
Gene Alias	ACS, PHACS
Gene Description	1-aminocyclopropane-1-carboxylate synthase homolog (Arabidopsis)(non-functional)
Omim ID	608405
Gene Ontology	Hyperlink
Other Designations	1-aminocyclopropane-1-carboxylate synthase homolog

Disease

- [Adenocarcinoma](#)
- [Esophageal Neoplasms](#)