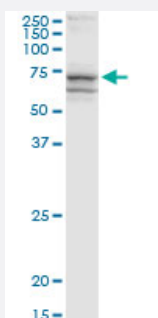


# RIOK1 (Human) IP-WB Antibody Pair

Catalog # H00083732-PW2

Size 1 Set

## Applications



Immunoprecipitation of RIOK1 transfected lysate using rabbit polyclonal anti-RIOK1 and Protein A Magnetic Bead ([U0007](#)), and immunoblotted with mouse purified polyclonal anti-RIOK1.

## Specification

### Product Description

This IP-WB antibody pair set comes with one antibody for immunoprecipitation and another to detect the precipitated protein in western blot.

### Reactivity

Human

### Quality Control Testing

Immunoprecipitation-Western Blot (IP-WB)

Immunoprecipitation of RIOK1 transfected lysate using rabbit polyclonal anti-RIOK1 and Protein A Magnetic Bead ([U0007](#)), and immunoblotted with mouse purified polyclonal anti-RIOK1.

### Supplied Product

Antibody pair set content:

1. Antibody pair for IP: rabbit polyclonal anti-RIOK1 (300 ul)
2. Antibody pair for WB: mouse purified polyclonal anti-RIOK1 (50 ug)

### Storage Instruction

Store reagents of the antibody pair set at -20°C or lower. Please aliquot to avoid repeated freeze thaw cycle. Reagents should be returned to -20°C storage immediately after use.

## Applications

- Immunoprecipitation-Western Blot

[Protocol Download](#)

## Gene Info — RIOK1

|                    |  |
|--------------------|--|
| Entrez GeneID      | <a href="#">83732</a>  |
| Gene Name          | RIOK1  |
| Gene Alias         | AD034, FLJ30006, MGC12903, bA288G3.1   |
| Gene Description   | RIO kinase 1 (yeast)   |
| Gene Ontology      | <a href="#">Hyperlink</a>  |
| Gene Summary       | This gene includes two alternatively spliced transcript variants, which encode different isoforms. The function of this gene has not been determined. [provided by RefSeq] |
| Other Designations | OTTHUMP00000015999 RIO kinase 1 prematurely truncated due to insertion of intronic sequence  |