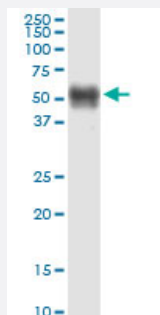


TMPRSS5 monoclonal antibody (M09), clone 2E5

Catalog # H00080975-M09

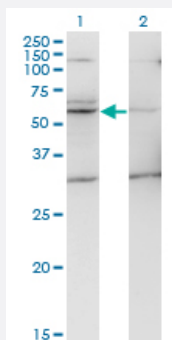
Size 100 ug

Applications



Western Blot (Tissue lysate)

TMPRSS5 monoclonal antibody (M09), clone 2E5. Western Blot analysis of TMPRSS5 expression in human kidney.

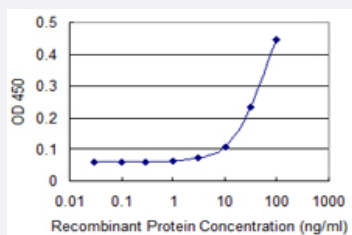


Western Blot (Transfected lysate)

Western Blot analysis of TMPRSS5 expression in transfected 293T cell line by TMPRSS5 monoclonal antibody (M09), clone 2E5.

Lane 1: TMPRSS5 transfected lysate (Predicted MW: 49.6 KDa).

Lane 2: Non-transfected lysate.



Sandwich ELISA (Recombinant protein)

Detection limit for recombinant GST tagged TMPRSS5 is 3 ng/ml as a capture antibody.

Specification

Product Description

Mouse monoclonal antibody raised against a partial recombinant TMPRSS5.

Immunogen	TMPRSS5 (NP_110397.1, 258 a.a. ~ 357 a.a) partial recombinant protein with GST tag. MW of the GST tag alone is 26 KDa.
Sequence	HCMHSFRLARLSSWRVHAGLVSHSAVRPHQGALVERIIPHPLYSAQNHDYDVALLRLQTALNFSD TVGAVCLPAKEQHFPKGSRCWVSGWGHThPSHTYS
Host	Mouse
Reactivity	Human
Interspecies Antigen Sequence	Mouse (79); Rat (80)
Isotype	IgG1 Kappa
Quality Control Testing	Antibody Reactive Against Recombinant Protein.
Storage Buffer	In 1x PBS, pH 7.4
Storage Instruction	Store at -20°C or lower. Aliquot to avoid repeated freezing and thawing.

Applications

- Western Blot (Tissue lysate)

TMPRSS5 monoclonal antibody (M09), clone 2E5. Western Blot analysis of TMPRSS5 expression in human kidney.

[Protocol Download](#)

- Western Blot (Transfected lysate)

Western Blot analysis of TMPRSS5 expression in transfected 293T cell line by TMPRSS5 monoclonal antibody (M09), clone 2E5.

Lane 1: TMPRSS5 transfected lysate (Predicted MW: 49.6 KDa).

Lane 2: Non-transfected lysate.

[Protocol Download](#)

- Sandwich ELISA (Recombinant protein)

Detection limit for recombinant GST tagged TMPRSS5 is 3 ng/ml as a capture antibody.

[Protocol Download](#)

- ELISA

Gene Info — TMPRSS5

Entrez GeneID	80975
GeneBank Accession#	NM_030770
Protein Accession#	NP_110397.1
Gene Name	TMPRSS5
Gene Alias	MGC141886, MGC148044, SPINESIN
Gene Description	transmembrane protease, serine 5
Omim ID	606751
Gene Ontology	Hyperlink
Gene Summary	This gene encodes a protein that belongs to the serine protease family. Serine proteases are known to be involved in many physiological and pathological processes. [provided by RefSeq]
Other Designations	-