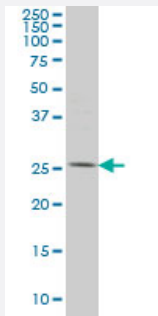


# PYCRL monoclonal antibody (M01), clone 4F11

Catalog # H00065263-M01

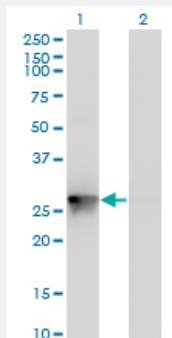
Size 100 ug

## Applications



### Western Blot (Cell lysate)

PYCRL monoclonal antibody (M01), clone 4F11 Western Blot analysis of PYCRL expression in HeLa ( Cat # L013V1 ).

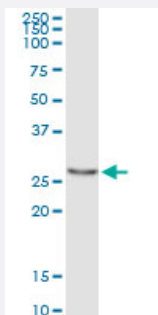


### Western Blot (Transfected lysate)

Western Blot analysis of PYCRL expression in transfected 293T cell line by PYCRL monoclonal antibody (M01), clone 4F11.

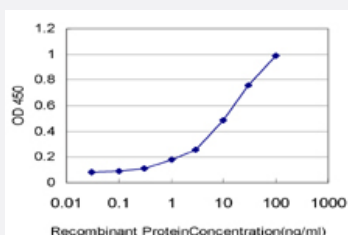
Lane 1: PYCRL transfected lysate (Predicted MW: 28.6 KDa).

Lane 2: Non-transfected lysate.



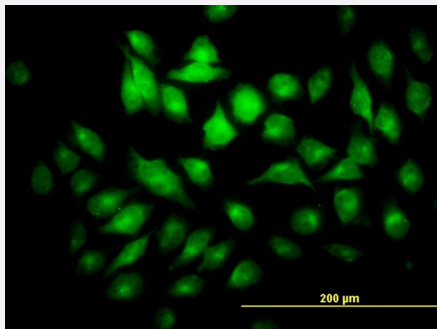
### Immunoprecipitation

Immunoprecipitation of PYCRL transfected lysate using anti-PYCRL monoclonal antibody and Protein A Magnetic Bead, and immunoblotted with PYCRL monoclonal antibody.



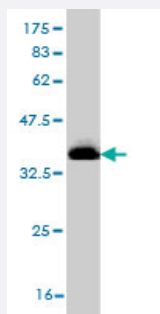
### Sandwich ELISA (Recombinant protein)

Detection limit for recombinant GST tagged PYCRL is approximately 0.3ng/ml as a capture antibody.



## Immunofluorescence

Immunofluorescence of monoclonal antibody to PYCRL on HeLa cell. [antibody concentration 10 ug/ml]



Western Blot detection against Immunogen (36.74 KDa) .

## Specification

<b>Product Description</b>	Mouse monoclonal antibody raised against a partial recombinant PYCRL.
<b>Immunogen</b>	PYCRL (NP_075566, 32 a.a. ~ 131 a.a) partial recombinant protein with GST tag. MW of the GST tag alone is 26 KDa.
<b>Sequence</b>	KVEAQHILASAPTDRNLCHFQALGCRTTHSNQEVLSQCLLVIFATKPHVLPVLAEVAPVVTTEHILVSVAAGVSLSTLEELLPPNTRVLRVLPNLPCVV
<b>Host</b>	Mouse
<b>Reactivity</b>	Human
<b>Interspecies Antigen Sequence</b>	Mouse (82); Rat (82)
<b>Isotype</b>	IgG2a Kappa
<b>Quality Control Testing</b>	Antibody Reactive Against Recombinant Protein. Western Blot detection against Immunogen (36.74 KDa) .
<b>Storage Buffer</b>	In 1x PBS, pH 7.4
<b>Storage Instruction</b>	Store at -20°C or lower. Aliquot to avoid repeated freezing and thawing.

## Applications

- Western Blot (Cell lysate)

PYCRL monoclonal antibody (M01), clone 4F11 Western Blot analysis of PYCRL expression in HeLa ( Cat # L013V1 ).

[Protocol Download](#)

- Western Blot (Transfected lysate)

Western Blot analysis of PYCRL expression in transfected 293T cell line by PYCRL monoclonal antibody (M01), clone 4F11.

Lane 1: PYCRL transfected lysate (Predicted MW: 28.6 KDa).

Lane 2: Non-transfected lysate.

[Protocol Download](#)

- Western Blot (Recombinant protein)

[Protocol Download](#)

- Immunoprecipitation

Immunoprecipitation of PYCRL transfected lysate using anti-PYCRL monoclonal antibody and Protein A Magnetic Bead, and immunoblotted with PYCRL monoclonal antibody.

[Protocol Download](#)

- Sandwich ELISA (Recombinant protein)

Detection limit for recombinant GST tagged PYCRL is approximately 0.3ng/ml as a capture antibody.

[Protocol Download](#)

- ELISA

- Immunofluorescence

Immunofluorescence of monoclonal antibody to PYCRL on HeLa cell. [antibody concentration 10 ug/ml]

## Gene Info — PYCRL

Entrez GeneID [65263](#)

GeneBank Accession# [NM\\_023078](#)

Protein Accession# [NP\\_075566](#)

Gene Name	PYCRL
Gene Alias	FLJ13852
Gene Description	pyrroline-5-carboxylate reductase-like
Gene Ontology	<a href="#">Hyperlink</a>
Other Designations	-

## Publication Reference

- [Functional specialization in proline biosynthesis of melanoma.](#)

De Ingeniis J, Ratnikov B, Richardson AD, Scott DA, Aza-Blanc P, De SK, Kazanov M, Pellecchia M, Ronai Z, Osterman AL, Smith JW.

PLoS One 2012 Sep; 7(9):e45190.

Application: WB-Ce, Human, Human melanocytes, Lu1205 cells, Melanoma cells

## Pathway

- [Arginine and proline metabolism](#)
- [Metabolic pathways](#)