

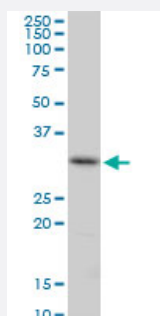
MaxPab®

CENPH purified MaxPab mouse polyclonal antibody (B02P)

Catalog # H00064946-B02P

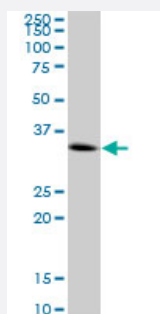
Size 50 ug

Applications



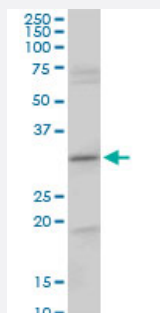
Western Blot (Cell lysate)

CENPH MaxPab polyclonal antibody. Western Blot analysis of CENPH expression in Raw 264.7.



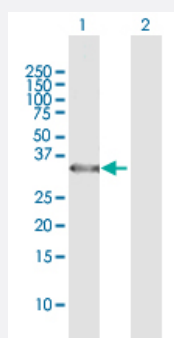
Western Blot (Cell lysate)

CENPH MaxPab polyclonal antibody. Western Blot analysis of CENPH expression in HeLa.



Western Blot (Cell lysate)

CENPH MaxPab polyclonal antibody. Western Blot analysis of CENPH expression in NIH/3T3.

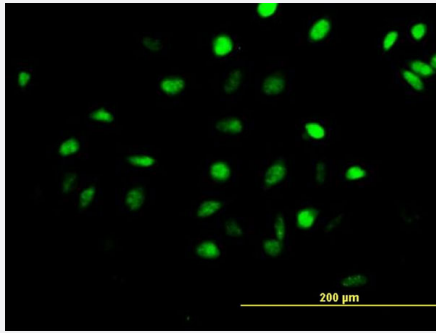


Western Blot (Transfected lysate)

Western Blot analysis of CENPH expression in transfected 293T cell line ([H00064946-T02](#)) by CENPH MaxPab polyclonal antibody.

Lane 1: CENPH transfected lysate(27.17 KDa).

Lane 2: Non-transfected lysate.



Immunofluorescence

Immunofluorescence of purified MaxPab antibody to CENPH on HeLa cell.
[antibody concentration 10 ug/ml]

Specification

Product Description	Mouse polyclonal antibody raised against a full-length human CENPH protein.
Immunogen	CENPH (NP_075060.1, 1 a.a. ~ 247 a.a) full-length human protein.
Sequence	MEEQPQMQDADEPADSGGEGRAGGPPQVAGAQAACSEDRMTLLRLRAQTKQQLLEYKSMVD ASEEKTPEQIMQEKKIEAKIEDLENEIEEVKVAFEIKKLALDRMRLSTALKKNLEKISRQSSVLMDN MKHLLLELNKLIMKSQQESWDLEEKLLDIRKKRLQLKQASESKLLEIQTEKNKQKIDLDSEMSERIK IIRQNLQMEIKITTVIQHVFNILGSKVNWAEDPALKEIVLQLEKNVDMM
Host	Mouse
Reactivity	Human, Mouse
Interspecies Antigen Sequence	Mouse (65)
Quality Control Testing	Antibody reactive against mammalian transfected lysate.
Storage Buffer	In 1x PBS, pH 7.4
Storage Instruction	Store at -20°C or lower. Aliquot to avoid repeated freezing and thawing.

Applications

- Western Blot (Cell lysate)

CENPH MaxPab polyclonal antibody. Western Blot analysis of CENPH expression in Raw 264.7.

[Protocol Download](#)

- Western Blot (Cell lysate)

CENPH MaxPab polyclonal antibody. Western Blot analysis of CENPH expression in HeLa.

[Protocol Download](#)

- Western Blot (Cell lysate)

CENPH MaxPab polyclonal antibody. Western Blot analysis of CENPH expression in NIH/3T3.

[Protocol Download](#)

- Western Blot (Transfected lysate)

Western Blot analysis of CENPH expression in transfected 293T cell line ([H00064946-T02](#)) by CENPH MaxPab polyclonal antibody.

Lane 1: CENPH transfected lysate(27.17 KDa).

Lane 2: Non-transfected lysate.

[Protocol Download](#)

- Immunofluorescence

Immunofluorescence of purified MaxPab antibody to CENPH on HeLa cell. [antibody concentration 10 ug/ml]

Gene Info — CENPH

Entrez GeneID [64946](#)

GeneBank Accession# [NM_022909](#)

Protein Accession# [NP_075060.1](#)

Gene Name CENPH

Gene Alias NNF1, PMF1

Gene Description centromere protein H

Omim ID [605607](#)

Gene Ontology [Hyperlink](#)

Gene Summary

Centromere and kinetochore proteins play a critical role in centromere structure, kinetochore formation, and sister chromatid separation. The protein encoded by this gene colocalizes with inner kinetochore plate proteins CENP-A and CENP-C in both interphase and metaphase. It localizes outside of centromeric heterochromatin, where CENP-B is localized, and inside the kinetochore corona, where CENP-E is localized during prometaphase. It is thought that this protein can bind to itself, as well as to CENP-A, CENP-B or CENP-C. Multimers of the protein localize constitutively to the inner kinetochore plate and play an important role in the organization and function of the active centromere-kinetochore complex. [provided by RefSeq]

Other Designations

NNF1, MIND kinetochore complex component, homolog|kinetochore protein CENP-H