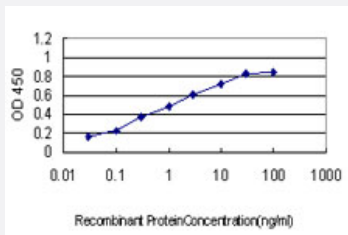


RNF20 monoclonal antibody (M01), clone 1C6

Catalog # H00056254-M01

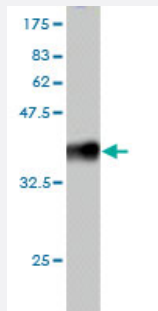
Size 100 ug

Applications



Sandwich ELISA (Recombinant protein)

Detection limit for recombinant GST tagged RNF20 is approximately 0.03ng/ml as a capture antibody.



Western Blot detection against Immunogen (36.74 KDa) .

Specification

Product Description	Mouse monoclonal antibody raised against a partial recombinant RNF20.
Immunogen	RNF20 (NP_062538, 177 a.a. ~ 276 a.a) partial recombinant protein with GST tag. MW of the GST tag alone is 26 KDa.
Sequence	RVESRRRAVSQIMTVYDKLQEKVELLSRKLNSGDNLIVVEAVQELNSFLAQENMRLQELTDLLQEKHRTMSQEF SKLQSKVETAESRVSVLESMIDDLQW
Host	Mouse
Reactivity	Human

Interspecies Antigen Sequence	Mouse (97); Rat (97)
Isotype	IgG2a Kappa
Quality Control Testing	Antibody Reactive Against Recombinant Protein. Western Blot detection against Immunogen (36.74 KDa) .
Storage Buffer	In 1x PBS, pH 7.4
Storage Instruction	Store at -20°C or lower. Aliquot to avoid repeated freezing and thawing.

Applications

- Western Blot (Recombinant protein)

[Protocol Download](#)

- Sandwich ELISA (Recombinant protein)

Detection limit for recombinant GST tagged RNF20 is approximately 0.03ng/ml as a capture antibody.

[Protocol Download](#)

- ELISA

Gene Info — RNF20

Entrez GeneID	56254
GeneBank Accession#	NM_019592
Protein Accession#	NP_062538
Gene Name	RNF20
Gene Alias	BRE1, BRE1A, FLJ11189, FLJ20382, KIAA2779, MGC129667, MGC129668, hBRE1
Gene Description	ring finger protein 20
Omim ID	607699
Gene Ontology	Hyperlink

Gene Summary

The protein encoded by this gene shares similarity with BRE1 of *S. cerevisiae*. Yeast BRE1 is a ubiquitin ligase required for the ubiquitination of histone H2B and the methylation of histone H3. [provided by RefSeq]

Other Designations

BRE1 E3 ubiquitin ligase homolog|homolog of *S. cerevisiae* BRE1