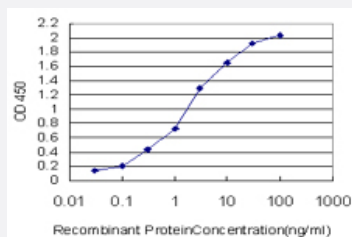


BARX1 monoclonal antibody (M06), clone 1B3

Catalog # H00056033-M06

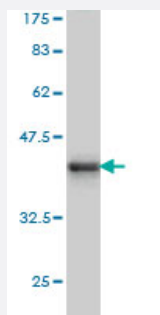
Size 100 ug

Applications



Sandwich ELISA (Recombinant protein)

Detection limit for recombinant GST tagged BARX1 is approximately 0.03ng/ml as a capture antibody.



Western Blot detection against Immunogen (36.74 KDa) .

Specification

Product Description	Mouse monoclonal antibody raised against a full length recombinant BARX1.
Immunogen	BARX1 (AAH09458, 1 a.a. ~ 100 a.a) full-length recombinant protein with GST tag. MW of the GST tag alone is 26 KDa.
Sequence	MGLEKRFEKQKYLSTPDRIDLAESLGLSQLQVKTWYQNRRMKWKKMVLQGGGLESPTKPKGRPK KNSIPTSEQLTEQERAKDAEKPAEVPGEPSDRSRED
Host	Mouse
Reactivity	Human

Interspecies Antigen Sequence	Mouse (95); Rat (97)
Isotype	IgG1 lambda
Quality Control Testing	Antibody Reactive Against Recombinant Protein. Western Blot detection against Immunogen (36.74 KDa) .
Storage Buffer	In 1x PBS, pH 7.4
Storage Instruction	Store at -20°C or lower. Aliquot to avoid repeated freezing and thawing.

Applications

- Western Blot (Recombinant protein)

[Protocol Download](#)

- Sandwich ELISA (Recombinant protein)

Detection limit for recombinant GST tagged BARX1 is approximately 0.03ng/ml as a capture antibody.

[Protocol Download](#)

- ELISA

Gene Info — BARX1

Entrez GeneID	56033
GeneBank Accession#	BC009458
Protein Accession#	AAH09458
Gene Name	BARX1
Gene Alias	-
Gene Description	BARX homeobox 1
Omim ID	603260
Gene Ontology	Hyperlink

Gene Summary

This gene encodes a member of the Bar subclass of homeobox transcription factors. Studies of the mouse and chick homolog suggest the encoded protein may play a role in developing teeth and craniofacial mesenchyme of neural crest origin. The protein may also be associated with differentiation of stomach epithelia. [provided by RefSeq]

Other Designations

BarH-like homeobox 1

Disease

- [Cleft Lip](#)
- [Cleft Palate](#)
- [Tooth Abnormalities](#)