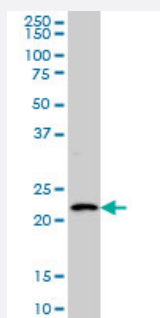


BARX1 monoclonal antibody (M05), clone 3C11

Catalog # H00056033-M05

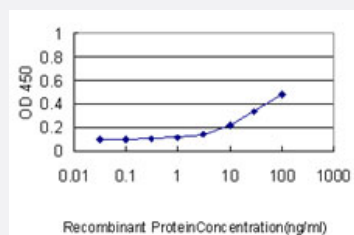
Size 50 ug

Applications



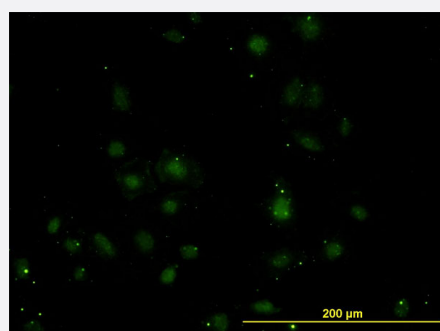
Western Blot (Cell lysate)

BARX1 monoclonal antibody (M05), clone 3C11 Western Blot analysis of BARX1 expression in HeLa S3 NE (Cat # L013V3).



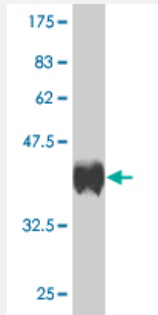
Sandwich ELISA (Recombinant protein)

Detection limit for recombinant GST tagged BARX1 is approximately 0.3ng/ml as a capture antibody.



Immunofluorescence

Immunofluorescence of monoclonal antibody to BARX1 on HeLa cell. [antibody concentration 10 ug/ml]



Western Blot detection against Immunogen (36.74 KDa) .

Specification

Product Description	Mouse monoclonal antibody raised against a full length recombinant BARX1.
Immunogen	BARX1 (AAH09458, 1 a.a. ~ 100 a.a) full-length recombinant protein with GST tag. MW of the GST tag alone is 26 KDa.
Sequence	MGLEKRFEKQKYLSTPDRIDLAESLGLSQLQVKTWYQNRRMKWKKIMLQGGGLESPTKPKGRPK KNSIPTSEQLTEQERAKDAEKPAEVPGEPSDRSRED
Host	Mouse
Reactivity	Human
Interspecies Antigen Sequence	Mouse (95); Rat (97)
Isotype	IgG1 Kappa
Quality Control Testing	Antibody Reactive Against Recombinant Protein. Western Blot detection against Immunogen (36.74 KDa) .
Storage Buffer	In 1x PBS, pH 7.4
Storage Instruction	Store at -20°C or lower. Aliquot to avoid repeated freezing and thawing.

Applications

- Western Blot (Cell lysate)

BARX1 monoclonal antibody (M05), clone 3C11 Western Blot analysis of BARX1 expression in Hela S3 NE (Cat # L013V3).

[Protocol Download](#)

- Western Blot (Recombinant protein)

[Protocol Download](#)

- Sandwich ELISA (Recombinant protein)

Detection limit for recombinant GST tagged BARX1 is approximately 0.3ng/ml as a capture antibody.

[Protocol Download](#)

- ELISA

- Immunofluorescence

Immunofluorescence of monoclonal antibody to BARX1 on HeLa cell. [antibody concentration 10 ug/ml]

Gene Info — BARX1

Entrez GeneID [56033](#)

GeneBank Accession# [BC009458](#)

Protein Accession# [AAH09458](#)

Gene Name BARX1

Gene Alias -

Gene Description BARX homeobox 1

Omim ID [603260](#)

Gene Ontology [Hyperlink](#)

Gene Summary This gene encodes a member of the Bar subclass of homeobox transcription factors. Studies of the mouse and chick homolog suggest the encoded protein may play a role in developing teeth and craniofacial mesenchyme of neural crest origin. The protein may also be associated with differentiation of stomach epithelia. [provided by RefSeq]

Other Designations BarH-like homeobox 1

Disease

- [Cleft Lip](#)

- [Cleft Palate](#)
- [Tooth Abnormalities](#)