

DNAxPAb

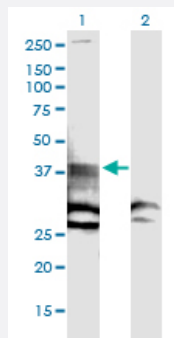
Hard-to-Find
Antibody

SLC22A11 DNAxPab

Catalog # H00055867-W01P

Size 100 ug

Applications



Western Blot (Transfected lysate)

Western Blot analysis of SLC22A11 expression in transfected 293T cell line by SLC22A11 DNAxPab polyclonal antibody.

Lane 1: SLC22A11 transfected lysate(33.33 KDa).

Lane 2: Non-transfected lysate.

Specification

Product Description	Rabbit polyclonal antibody raised against a partial-length human SLC22A11 DNA using DNAx™ Immune technology.
Technology	DNAx™ Immune
Immunogen	SLC22A11 (NP_060954.1, 32 a.a. ~ 142 a.a) partial-length human DNA
Sequence	PSQMLLENFSAAIPGHRCWTHMLDNGSAVSTNMTPKALLTISIPPGPNQGPHQCRRFRQPQWQL LDPNATATSWSEADTEPCVDGWVYDRSVFTSTIVAKWDLVCSSQGLK
Host	Rabbit
Reactivity	Human
Purification	Protein A
Quality Control Testing	Antibody reactive against mammalian transfected lysate.
Storage Buffer	In 1x PBS, pH 7.4
Storage Instruction	Store at -20°C or lower. Aliquot to avoid repeated freezing and thawing.

Applications

- Western Blot (Transfected lysate)

Western Blot analysis of SLC22A11 expression in transfected 293T cell line by SLC22A11 DNAxPab polyclonal antibody.

Lane 1: SLC22A11 transfected lysate(33.33 KDa).

Lane 2: Non-transfected lysate.

[Protocol Download](#)

- Immunofluorescence (Transfected cell)

- Flow Cytometry (Transfected cell)

Gene Info — SLC22A11

Entrez GeneID	55867
GeneBank Accession#	NM_018484.2
Protein Accession#	NP_060954.1
Gene Name	SLC22A11
Gene Alias	MGC34282, OAT4, hOAT4
Gene Description	solute carrier family 22 (organic anion/urate transporter), member 11
Omim ID	607097
Gene Ontology	Hyperlink
Gene Summary	The protein encoded by this gene is involved in the sodium-independent transport and excretion of organic anions, some of which are potentially toxic. The encoded protein is an integral membrane protein and is found mainly in the kidney and in the placenta, where it may act to prevent potentially harmful organic anions from reaching the fetus. [provided by RefSeq]
Other Designations	organic anion transporter 4 solute carrier family 22 (organic anion/cation transporter), member 11 solute carrier family 22 member 11

Disease

- [Coronary Artery Disease](#)

- [Genetic Predisposition to Disease](#)
- [Gout](#)
- [HIV Infections](#)
- [Hypertension](#)
- [Kidney Failure](#)
- [Osteoporosis](#)