

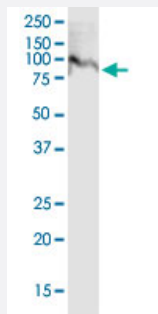
CX Grade

VPS35 monoclonal antibody (M02J), clone 2D3

Catalog # H00055737-M02J

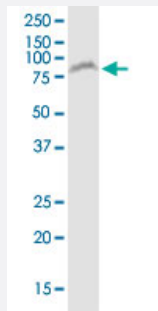
Size 50 ug

Applications



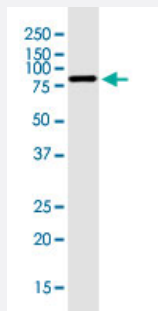
Western Blot (Tissue lysate)

VPS35 monoclonal antibody (M02J), clone 2D3. Western Blot analysis of VPS35 expression in rat brain.



Western Blot (Tissue lysate)

VPS35 monoclonal antibody (M02J), clone 2D3. Western Blot analysis of VPS35 expression in human colon.

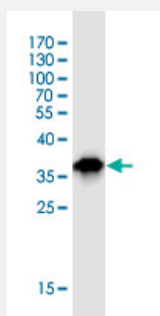
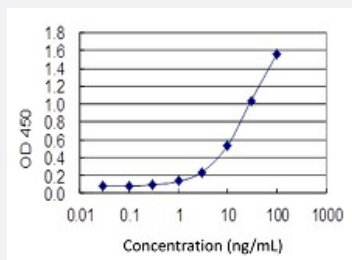


Western Blot (Cell lysate)

VPS35 monoclonal antibody (M02J), clone 2D3. Western Blot analysis of VPS35 expression in HeLa.

Sandwich ELISA (Recombinant protein)

Detection limit for recombinant GST tagged VPS35 is 0.3 ng/ml as a capture antibody.



Western Blot detection against Immunogen (36.74 KDa) .

Specification

| | |
|--------------------------------------|--------------------------------------------------------------------------------------------------------------------------------------------|
| Product Description | Mouse monoclonal antibody raised against a partial recombinant VPS35. This product is belong to Cell Culture Grade Antibody (CX Grade). |
| Immunogen | VPS35 (NP_060676, 697 a.a. ~ 796 a.a) partial recombinant protein with GST tag. MW of the GST tag alone is 26 KDa. |
| Sequence | MECLKKALKIANQCMDPSLQVQLFIEILNRYIFYEKENDAVTIQVLNQLIKIREDLPNLESSEETEQLNKHFHNTLEHLRLRRESPESSEGPYEGIL |
| Host | Mouse |
| Reactivity | Human, Rat |
| Interspecies Antigen Sequence | Mouse (99); Rat (99) |
| Preparation Method | Cell Culture Production |
| Isotype | IgG2a Kappa |
| Quality Control Testing | Antibody Reactive Against Recombinant Protein. Western Blot detection against Immunogen (36.74 KDa) . |
| Storage Buffer | In 1x PBS, pH 7.4 |
| Storage Instruction | Store at -20°C or lower. Aliquot to avoid repeated freezing and thawing. |

Applications

- Western Blot (Tissue lysate)

VPS35 monoclonal antibody (M02J), clone 2D3. Western Blot analysis of VPS35 expression in rat brain.

[Protocol Download](#)

- Western Blot (Tissue lysate)

VPS35 monoclonal antibody (M02J), clone 2D3. Western Blot analysis of VPS35 expression in human colon.

[Protocol Download](#)

- Western Blot (Cell lysate)

VPS35 monoclonal antibody (M02J), clone 2D3. Western Blot analysis of VPS35 expression in HeLa.

[Protocol Download](#)

- Western Blot (Recombinant protein)

[Protocol Download](#)

- Sandwich ELISA (Recombinant protein)

Detection limit for recombinant GST tagged VPS35 is 0.3 ng/ml as a capture antibody.

[Protocol Download](#)

- ELISA

Gene Info — VPS35

| | |
|---------------|-----------------------|
| Entrez GeneID | 55737 |
|---------------|-----------------------|

| | |
|---------------------|---------------------------|
| GeneBank Accession# | NM_018206 |
|---------------------|---------------------------|

| | |
|--------------------|---------------------------|
| Protein Accession# | NP_060676 |
|--------------------|---------------------------|

| | |
|-----------|-------|
| Gene Name | VPS35 |
|-----------|-------|

| | |
|------------|------------------------------------------------------------------|
| Gene Alias | DKFZp434E1211, DKFZp434P1672, FLJ10752, FLJ13588, FLJ20388, MEM3 |
|------------|------------------------------------------------------------------|

| | |
|------------------|-----------------------------------------------------|
| Gene Description | vacuolar protein sorting 35 homolog (S. cerevisiae) |
|------------------|-----------------------------------------------------|

| | |
|---------|------------------------|
| Omim ID | 606931 |
|---------|------------------------|

Gene Ontology[Hyperlink](#)**Gene Summary**

This gene belongs to a group of vacuolar protein sorting (VPS) genes. The encoded protein is a component of a large multimeric complex, termed the retromer complex, involved in retrograde transport of proteins from endosomes to the trans-Golgi network. The close structural similarity between the yeast and human proteins that make up this complex suggests a similarity in function. Expression studies in yeast and mammalian cells indicate that this protein interacts directly with VPS35, which serves as the core of the retromer complex. [provided by RefSeq]

Other Designations

maternal-embryonic 3|vacuolar protein sorting 35