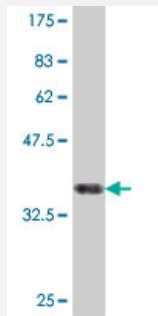


VPS35 polyclonal antibody (A01)

Catalog # H00055737-A01

Size 50 uL

Applications



Western Blot detection against Immunogen (37.11 KDa) .

Specification

Product Description	Mouse polyclonal antibody raised against a partial recombinant VPS35.
Immunogen	VPS35 (NP_060676, 697 a.a. ~ 796 a.a) partial recombinant protein with GST tag.
Sequence	MECLKKALKIANQCMDPSLQVQLFIEILNRYIFYEKENDAVTIQVLNQLIQKIREDLPNLESSEETEQI NKHFHNTLEHLRLRRESPESSEGPYEGIL
Host	Mouse
Reactivity	Human
Interspecies Antigen Sequence	Mouse (99); Rat (99)
Quality Control Testing	Antibody Reactive Against Recombinant Protein. Western Blot detection against Immunogen (37.11 KDa) .
Storage Buffer	50 % glycerol
Storage Instruction	Store at -20°C or lower. Aliquot to avoid repeated freezing and thawing.

Applications

- Western Blot (Recombinant protein)

[Protocol Download](#)

- ELISA

Gene Info — VPS35

Entrez GeneID [55737](#)

GeneBank Accession# [NM_018206](#)

Protein Accession# [NP_060676](#)

Gene Name VPS35

Gene Alias DKFZp434E1211, DKFZp434P1672, FLJ10752, FLJ13588, FLJ20388, MEM3

Gene Description vacuolar protein sorting 35 homolog (S. cerevisiae)

Omim ID [606931](#)

Gene Ontology [Hyperlink](#)

Gene Summary This gene belongs to a group of vacuolar protein sorting (VPS) genes. The encoded protein is a component of a large multimeric complex, termed the retromer complex, involved in retrograde transport of proteins from endosomes to the trans-Golgi network. The close structural similarity between the yeast and human proteins that make up this complex suggests a similarity in function. Expression studies in yeast and mammalian cells indicate that this protein interacts directly with VPS35, which serves as the core of the retromer complex. [provided by RefSeq]

Other Designations maternal-embryonic 3|vacuolar protein sorting 35