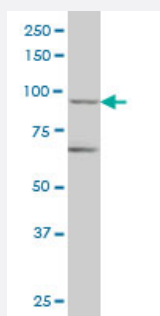


TRIM36 monoclonal antibody (M01), clone 2D11

Catalog # H00055521-M01

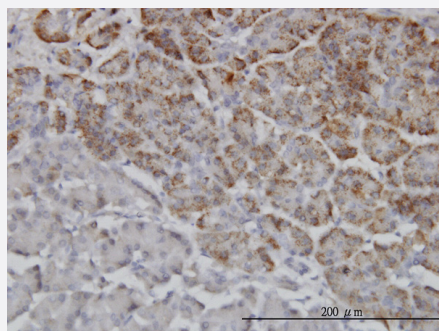
Size 100 ug

Applications



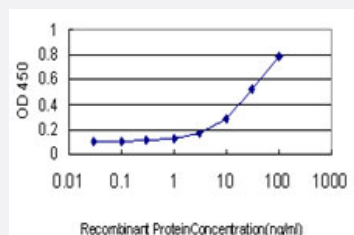
Western Blot (Cell lysate)

TRIM36 monoclonal antibody (M01), clone 2D11 Western Blot analysis of TRIM36 expression in IMR-32 (Cat # L008V1).



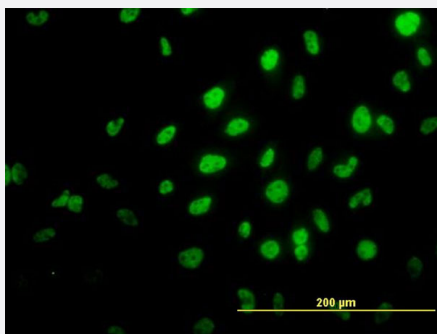
Immunohistochemistry (Formalin/PFA-fixed paraffin-embedded sections)

Immunoperoxidase of monoclonal antibody to TRIM36 on formalin-fixed paraffin-embedded human pancreas. [antibody concentration 3 ug/ml]



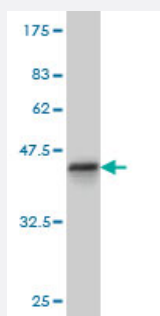
Sandwich ELISA (Recombinant protein)

Detection limit for recombinant GST tagged TRIM36 is approximately 1ng/ml as a capture antibody.



Immunofluorescence

Immunofluorescence of monoclonal antibody to TRIM36 on HeLa cell. [antibody concentration 10 ug/ml]



Western Blot detection against Immunogen (37.73 KDa) .

Specification

Product Description	Mouse monoclonal antibody raised against a partial recombinant TRIM36.
Immunogen	TRIM36 (NP_061170, 391 a.a. ~ 499 a.a) partial recombinant protein with GST tag. MW of the GST tag alone is 26 KDa.
Sequence	TSFEDYVVNTSKQTELLGELSSFFSSGIDVPEINEEQSKVYNNALINWHHPEKDKADSYVLEYRKINR DDEMSWNEIEVCGTSKIIQDLENSSTYAFRVRAYKGSICSPC
Host	Mouse
Reactivity	Human
Interspecies Antigen Sequence	Mouse (85); Rat (85)
Isotype	IgG1 Kappa
Quality Control Testing	Antibody Reactive Against Recombinant Protein. Western Blot detection against Immunogen (37.73 KDa) .
Storage Buffer	In 1x PBS, pH 7.4
Storage Instruction	Store at -20°C or lower. Aliquot to avoid repeated freezing and thawing.

Applications

- Western Blot (Cell lysate)

TRIM36 monoclonal antibody (M01), clone 2D11 Western Blot analysis of TRIM36 expression in IMR-32 (Cat # L008V1).

[Protocol Download](#)

- Western Blot (Recombinant protein)

[Protocol Download](#)

- Immunohistochemistry (Formalin/PFA-fixed paraffin-embedded sections)

Immunoperoxidase of monoclonal antibody to TRIM36 on formalin-fixed paraffin-embedded human pancreas. [antibody concentration 3 ug/ml]

[Protocol Download](#)

- Sandwich ELISA (Recombinant protein)

Detection limit for recombinant GST tagged TRIM36 is approximately 1ng/ml as a capture antibody.

[Protocol Download](#)

- ELISA

- Immunofluorescence

Immunofluorescence of monoclonal antibody to TRIM36 on HeLa cell. [antibody concentration 10 ug/ml]

Gene Info — TRIM36

Entrez GeneID	55521
---------------	-----------------------

GeneBank Accession#	NM_018700
---------------------	---------------------------

Protein Accession#	NP_061170
--------------------	---------------------------

Gene Name	TRIM36
-----------	--------

Gene Alias	HAPRIN, RBCC728, RNF98
------------	------------------------

Gene Description	tripartite motif-containing 36
------------------	--------------------------------

Omim ID	609317
---------	------------------------

Gene Ontology

[Hyperlink](#)

Gene Summary

The protein encoded by this gene is a member of the tripartite motif (TRIM) family. The TRIM motif includes three zinc-binding domains, a RING, a B-box type 1 and a B-box type 2, and a coiled-coil region. Multiple alternatively spliced transcript variants that encode different protein isoforms have been described for this gene. [provided by RefSeq]

Other Designations

RING finger protein 98|tripartite motif protein 36|zinc-binding protein Rbcc728

Disease

- [Tobacco Use Disorder](#)