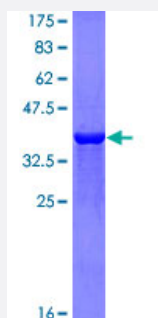


BCOR (Human) Recombinant Protein (Q01)

Catalog # H00054880-Q01

Size 25 ug, 10 ug

Applications



Specification

Product Description	Human BCOR partial ORF (NP_060215, 1361 a.a. - 1460 a.a.) recombinant protein with GST-tag at N-terminal.
Sequence	RRFRKRPEPSSDYDLSPAKQEPKPFDRLLQQLLPASQSTQLPCSSSPQETTQSRPMPPEARLLV NKNAGETLLQRAARLGYYEVVLYCLENKICDVNHRD
Host	Wheat Germ (in vitro)
Theoretical MW (kDa)	36.74
Interspecies Antigen Sequence	Mouse (88); Rat (89)
Preparation Method	in vitro wheat germ expression system
Purification	Glutathione Sepharose 4 Fast Flow
Quality Control Testing	12.5% SDS-PAGE Stained with Coomassie Blue.
Storage Buffer	50 mM Tris-HCl, 10 mM reduced Glutathione, pH=8.0 in the elution buffer.
Storage Instruction	Store at -80°C. Aliquot to avoid repeated freezing and thawing.
Note	Best use within three months from the date of receipt of this protein.

Applications

- Enzyme-linked Immunoabsorbent Assay
- Western Blot (Recombinant protein)
- Antibody Production
- Protein Array

Gene Info — BCOR

Entrez GeneID [54880](#)

GeneBank Accession# [NM_017745](#)

Protein Accession# [NP_060215](#)

Gene Name BCOR

Gene Alias ANOP2, FLJ20285, FLJ38041, KIAA1575, MAA2, MCOPS2, MGC131961, MGC71031

Gene Description BCL6 co-repressor

Omim ID [300166](#) [300485](#)

Gene Ontology [Hyperlink](#)

Gene Summary The protein encoded by this gene was identified as an interacting corepressor of BCL6, a POZ/zinc finger transcription repressor that is required for germinal center formation and may influence apoptosis. This protein selectively interacts with the POZ domain of BCL6, but not with eight other POZ proteins. Specific class I and II histone deacetylases (HDACs) have been shown to interact with this protein, which suggests a possible link between the two classes of HDACs. Several transcript variants encoding different isoforms have been found for this gene. [provided by RefSeq]

Other Designations 5830466J11Rik|8430401K06Rik|BCL-6 interacting corepressor|OTTHUMP00000025766|OTTHUMP00000025768